

Release Notes

USB Write Protection Utility

Disables the write capability
on any USB Port for USB
memory storage devices

(Instruments with Windows®
XP / SP2)

Table of Contents

- 1 General Topics 3**
- 1.1 Features3**
- 1.2 Supported Instruments3**
- 1.3 Preconditions4**
- 1.4 USB Write Protection Installation4**
- 1.5 USB Write Protection Deinstallation5**

History

Date	Rel Note Revision	Changes
January 2007	1	First revision
September 2007	2	List of instruments with XP SP2 added
July 2008	3	R&S FSUP, R&S ESL and R&S FSV added
July 2010	4	R&S FSVR added

1 General Topics

1.1 Features

USB ports can pose a security threat in high-security locations. Generally, this threat comes from small USB pen drives (a.k.a. memory sticks, key drives, etc) which can be very easily concealed, yet can quickly read/write several GBytes of data.

The “USB Mass Memory Write Protection” utility disables the write capability on any USB Port for storage devices. After installation and a reboot of the instrument, any USB Mass Memory Device which is plugged in, can not be written.

Should the need for the USB port write capabilities arise, uninstall the “USB Write Protection” utility. After reboot of the instrument writing to USB Mass Memory devices is enabled.

1.2 Supported Instruments

Instrument Family	Instrument
EMI Test Receiver	R&S ESU
	R&S ESL
	R&S ESCI
Spectrum Analyzer	R&S FSL
	R&S FSP
	R&S FSU
Signal Analyzer	R&S FSQ
	R&S FSG
	R&S FSV
Signal Source Analyzer	R&S FSUP
Realtime Spectrum Analyzer	R&S FSVR
Baseband Analyzer	R&S FMU
Vector Network Analyzer	R&S ZVL
	R&S ZVA
	R&S ZVB
	R&S ZVT

1.3 Preconditions

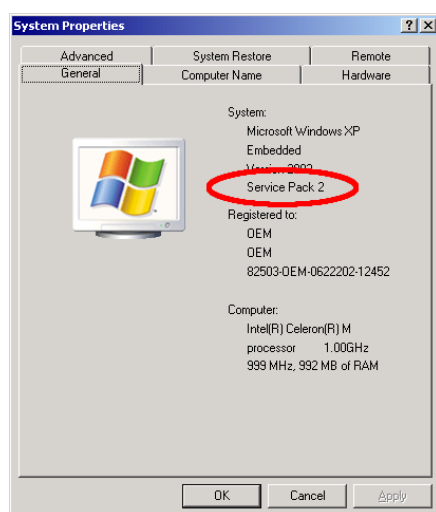
The “USB Mass Memory Write Protection” utility works on instruments with Windows®XP SP2 only.

Please note that for installation of the utility you have to plug in a keyboard and a mouse into the instrument.

Check for Windows®XP SP2

Make sure that Windows®XP SP2 is installed on the instrument by checking the system properties in the Windows® control panel. Press the CTRL & ESC keys, select "Settings" and under "Control Panel" the "System" properties:

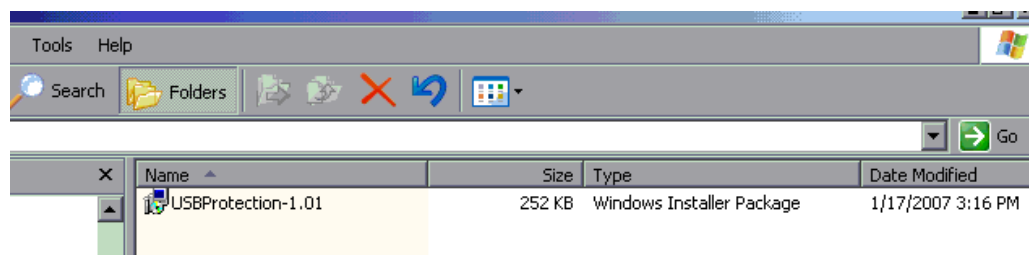
Start ► Settings ► Control Panel ► System:



1.4 USB Write Protection Installation

To start the installation procedure, proceed as follows:

- If the instrument firmware is running, terminate the firmware by pressing ALT-F4
- Start the “Explorer” and select the directory which contains the copy of the “USBProtection-1.01.msi” file, as shown below:



- ▶ Start the installation by selecting the file and pressing the "Return" key or by a mouse double click
- ▶ The installation starts and installs all necessary files onto the hard disk. Afterwards reboot the instrument to activate the USB write protection.

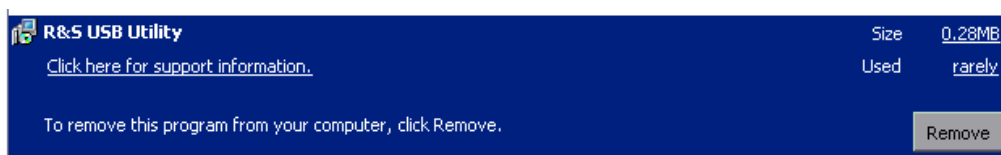
Note:

Do not make any user interaction during the update process!

1.5 USB Write Protection Deinstallation

To start the deinstallation procedure, proceed as follows:

- ▶ If the instrument firmware is running, terminate the firmware by pressing ALT-F4
- ▶ Select the "Start Menu" by pressing the CTRL & ESC keys and select the following entry
Start ▶ Settings ▶ Control Panel ▶ Add or Remove Programs
- ▶ Select the following entry and press the "Remove" button



- ▶ Afterwards the "USB Mass Memory Write Protection" is deinstalled. To activate the changes reboot the instrument



About Rohde & Schwarz

Rohde & Schwarz is an independent group of companies specializing in electronics. It is a leading supplier of solutions in the fields of test and measurement, broadcasting, radiomonitoring and radiolocation, as well as secure communications. Established 75 years ago, Rohde & Schwarz has a global presence and a dedicated service network in over 70 countries. Company headquarters are in Munich, Germany.

Environmental commitment

- Energy-efficient products
- Continuous improvement in environmental sustainability
- ISO 14001-certified environmental management system



Regional contact

USA & Canada

USA: 1-888-TEST-RSA (1-888-837-8772)
from outside USA: +1 410 910 7800

CustomerSupport@rohde-schwarz.com

East Asia

+65 65 13 04 88

CustomerSupport@rohde-schwarz.com

Rest of the World

+49 89 4129 137 74

CustomerSupport@rohde-schwarz.com



Rohde & Schwarz GmbH & Co. KG

Mühlendorfstraße 15 | D - 81671 München

Phone + 49 89 4129 - 0 | Fax + 49 89 4129 - 13777