

Products: SMIQ, ABFS

# SMIQ/ABFS TV

## SMIQ/ABFS remote display

### Application Note

SMIQ/ABFS TV shows the SMIQ or ABFS display remotely on any Windows™ PC

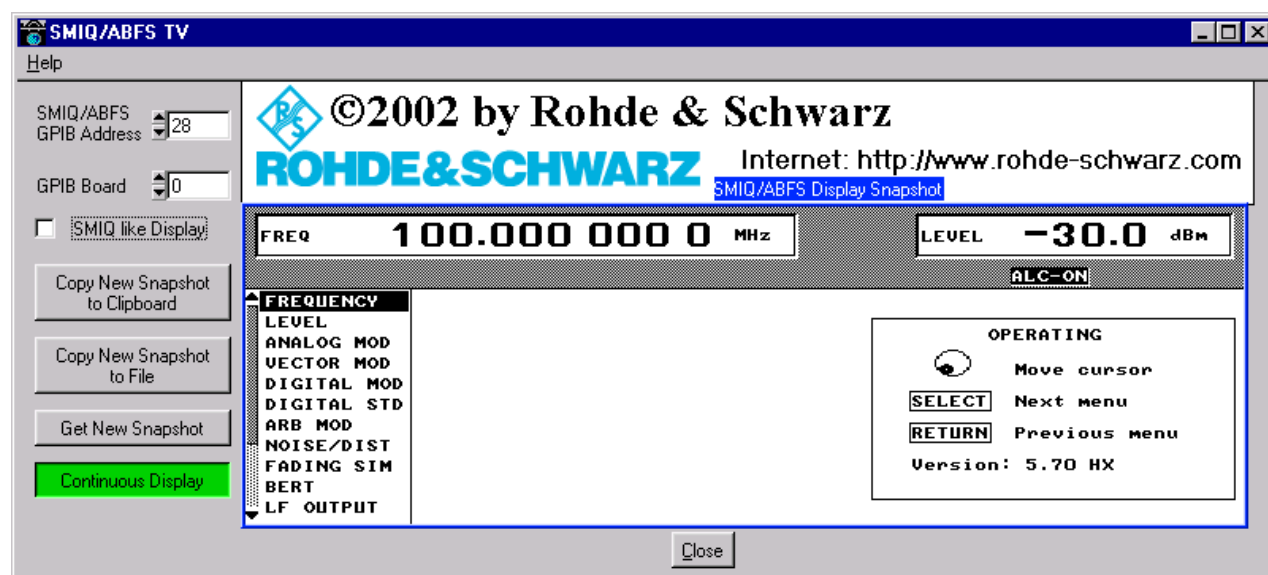


## Contents

1	Introduction to SMIQ/ABFS TV.....	2
2	SMIQ/ABFS TV Operation Details.....	2
3	Description of the User Interface.....	3
4	Ordering information.....	4

## 1 Introduction to SMIQ/ABFS TV

SMIQ/ABFS TV provides a convenient way of displaying the SMIQ or ABFS display output remotely on an external Windows™ PC. Demonstrations with SMIQ or ABFS can easily be shown to a large audience utilizing a projector. SMIQ/ABFS TV can also copy display snapshots to the Windows clipboard or to files in bitmap format. A GPIB connection to the SMIQ or ABFS is required.



## 2 SMIQ/ABFS TV Operation Details

SMIQ/ABFS TV works well together with other software using the GPIB bus when running on the same PC. It is possible to control the SMIQ or ABFS remotely and watch the display with SMIQ/ABFS TV in parallel.

The remote control software might activate the “Remote Enable” line of the GPIB bus when sending its commands. In this case, the SMIQ or ABFS only displays its status page – hiding any menu activity. As a workaround, restarting the SMIQ/ABFS TV continuous display by toggling the “Continuous Display” button will clear the “Remote Enable” line and therefore reactivate the menu display.

As GPIB does not allow two controllers on one bus, it is not possible to run SMIQ/ABFS TV on one PC and the remote control software on another one, with both connected to the same GPIB bus.

SMIQ/ABFS TV shows all changes to the menus exactly as displayed on the original SMIQ/ABFS display with two exceptions: Calibrations and test procedures from the menus UTILITIES – CALIB and UTILITIES – TEST involve non-interruptible routines. When executing these functions, display messages will only be shown at procedure end, in case there have been any detected failures.

### **3 Description of the User Interface**

#### **SMIQ/ABFS GPIB Address**

Set the GPIB Address of the SMIQ or ABFS you intend to display here.

#### **GPIB Board**

When multiple GPIB boards are installed in your PC, set the wanted board id here. Set it to 0 when only one board is present.

#### **SMIQ like Display**

When checked, a fancy SMIQ like display is shown as soon as the “Continuous Display” button is activated.

#### **Copy New Snapshot to Clipboard**

Gets a new snapshot of the current SMIQ/ABFS display and copies it to the Windows clipboard.

#### **Copy New Snapshot to File**

Gets a new snapshot of the current SMIQ/ABFS display and saves it to a file in Windows .bmp format.

#### **Get New Snapshot**

Gets a new snapshot of the current SMIQ/ABFS display and shows it on the screen.

#### **Continuous Display**

When activated, the display is continuously updated. Ideal for presentations with large audiences.

## 4 Ordering information

**Vector Signal Generator:**

SMIQ02B	300 kHz to 3.3 GHz	1125.5555.02
SMIQ03B	300 kHz to 3.3 GHz	1125.5555.03
SMIQ04B	300 kHz to 4.4 GHz	1125.5555.04
SMIQ06B	300 kHz to 6.4 GHz	1125.5555.06
SMIQ03HD	300 kHz to 3.3 GHz	1125.5555.33

**Baseband Fading Simulator:**

ABFS		1114.8506.02
------	--	--------------



**ROHDE & SCHWARZ**

ROHDE & SCHWARZ GmbH & Co. KG · Mühldorfstraße 15 · D-81671 München · P.O.B 80 14 69 · D-81614 München ·  
Telephone +49 89 4129 -0 · Fax +49 89 4129 - 13777 · Internet: <http://www.rohde-schwarz.com>

*This application note and the supplied programs may only be used subject to the conditions of use set forth in the download area of the Rohde & Schwarz website.*