

R&S® ARB Toolbox PLUS

V 1.2.0

Manual



Table of Contents

1	Program Features	6
2	Installation.....	7
2.1	Prerequisites	7
2.2	Supported Operating Systems	7
2.3	Supported Instruments	7
2.4	Installation Procedure on Windows.....	8
3	Command Line Options	9
4	Getting Started.....	10
5	Configuring Instruments	12
6	Defining the Application Colors	15
7	Using the Browsers	17
7.1	Local File System Context Menu.....	18
7.1.1	Folder Options	18
7.1.2	File Options.....	19
7.2	Remote File System Context Menu.....	21
7.2.1	Folder Options	21
7.2.2	File Options.....	22
8	The Signal Creation Module.....	23
9	The Waveform Viewer.....	27
10	The Marker Editor	31
11	The Level Scaling Module	33
12	The Waveform Composer	35
12.1	The Track Editor.....	36
12.1.1	Center Information	37
12.1.2	Offline Files	38
12.1.3	Wrapped-Around Segments	39
12.1.4	Truncation	40

12.1.5	Fade-In and Fade-Out	41
12.1.6	Setting the End Position	42
12.2	Zooming and Navigation	42
12.3	Adding and Removing Segments	43
12.3.1	Cursor Control.....	43
12.3.2	Insert	43
12.3.3	Overwrite.....	43
12.3.4	Extract.....	44
12.3.5	Lift	44
12.4	Segment Settings.....	45
12.4.1	General Settings	46
12.4.2	Truncation	48
12.4.3	Position in Output.....	48
12.4.4	Flags	48
12.4.5	Fade-In and Fade-Out	49
12.5	Target Waveform Settings	50
12.6	Building the Target Waveform.....	52
13	Capturing with the Spectrum Analyzer	53
	Appendix	57
A	Licenses.....	57
A.1	GNU Lesser General Public License (LGPL) 2.1	57

© 2008 Rohde & Schwarz GmbH & Co. KG
81671 Munich, Germany
Printed in Germany – Subject to change – Data without tolerance limits is not binding.
R&S® is a registered trademark of Rohde & Schwarz GmbH & Co. KG.
Trade names are trademarks of their respective holders.

The following abbreviations are used throughout this manual:
R&S® ARB Toolbox^{PLUS} is abbreviated as ARB Toolbox PLUS.

1 Program Features

The ARB Toolbox PLUS is a powerful and easy-to-use set of tools for creating or manipulating waveforms for R&S vector signal generators and baseband IQ modulation generators. Use the Toolbox on a PC to;

- ▶ Generate many analog modulated waveforms, such as AM, FM, PM, Pulse, Multi Carrier, and Noise.
- ▶ Create R&S ARB waveforms from custom data, MATLAB .mat files, R&S .wav, or R&S .iq.tar files.
- ▶ View the waveform content as I/Q, power, phase, or frequency versus time. Additionally see spectrum and I/Q constellation or density plot.
- ▶ Import I/Q data from the most recent Rohde & Schwarz spectrum analyzers. Capture the I/Q data and save it as a waveform file.
- ▶ Flexibly combine waveforms to form a single new waveform. Combine data from up to 16 parallel tracks; place waveform segments freely in time and frequency domain.
- ▶ Import data from the R&S PR100 portable radio transmissions monitor and convert the data streams to R&S ARB waveform files.
- ▶ Resample a waveform to change the target clock rate or sample count, Rescale the peak power value. Change the RMS signal level of a waveform. Low-pass filter waveform data.
- ▶ Edit the marker traces of a waveform.
- ▶ Analyze and fix wrap-around issues in waveform files.

To simplify file handling, the ARB Toolbox PLUS can display the directory structure of any local file system as well as file systems from R&S instruments that are connected via remote control.

As well as many other functions, the ARB Toolbox PLUS replaces the R&S IQ Wizard, used to load IQ signal files.

ARB Toolbox PLUS is available for Windows, Linux and Mac OS X operating systems.

2 Installation

2.1 Prerequisites

Installing ARB Toolbox PLUS requires approximately 16 Mbyte of free hard disk space.

The ARB Toolbox PLUS software uses the VISA runtime environment for communicating with instruments. If VISA is not installed on your system, only local file system operations will be functional.

VISA can be obtained from National Instruments. Please see their website (www.ni.com/visa) for downloads and for the terms and conditions.

2.2 Supported Operating Systems

ARB Toolbox PLUS is available for the following operating systems.

- ▶ Windows XP, Windows VISTA and Windows 7 as a 32 bit application
- ▶ Linux
- ▶ Mac OS X (Snow Leopard)

2.3 Supported Instruments

The following instruments are fully supported for use with ARB Toolbox PLUS.

- ▶ R&S®SMU200A, R&S®SMJ100A, R&S®SMATE200A
- ▶ R&S®AFQ100A, R&S®AFQ100B
- ▶ R&S®SMBV100A

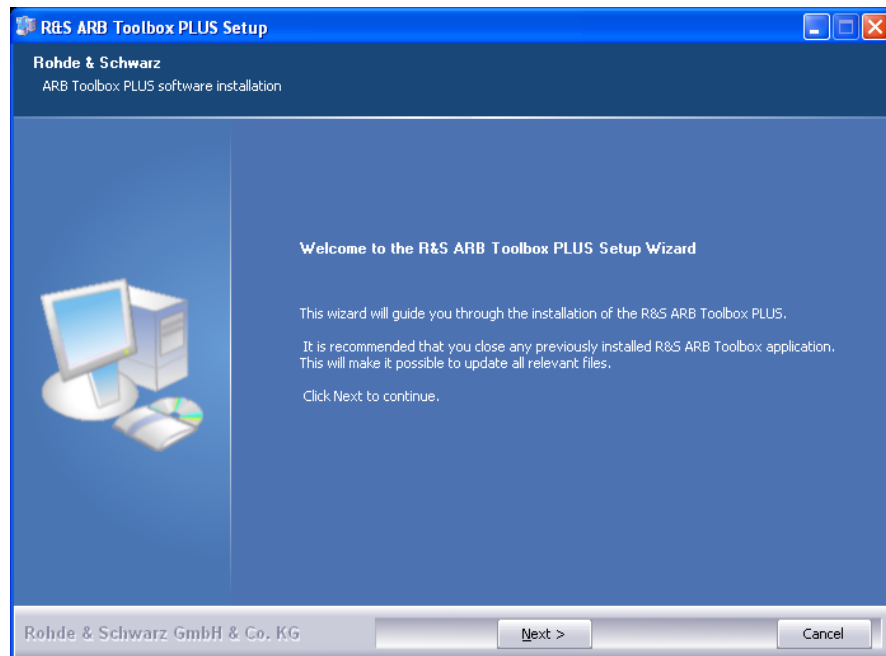
The following file formats from Rohde & Schwarz equipment is supported:

- ▶ R&S®PR100 .riq file format
- ▶ R&S .wav file format
- ▶ R&S .iq.tar file format

Additionally, the spectrum analyzer import module supports the I/Q data imports from the most recent Rohde & Schwarz spectrum analyzers.

2.4 Installation Procedure on Windows

ARB Toolbox PLUS is installed by executing the self-extracting installer software. The installer will guide you through the entire installation process.



During the installation process, the system verifies the presence of the VISA runtime environment and displays a warning if the runtime environment cannot be detected. In this case, file transfers to or from an instrument are not possible. Local file system operations remain functional.

3 Command Line Options

ARB Toolbox PLUS provides several command line options. These command line options are generally not required and are mainly used for debugging purposes.

--debug

The debug option generates additional debugging information in the message window. This option should only be used for debugging purposes, because it slows down the application significantly.

--no-visa

This option disables loading the VISA interface during program startup. If VISA is disabled, instrument communications are no longer possible. However, all local file system operations remain functional.

This option is mainly intended for Linux-based systems in which the VISA kernel module may not function correctly after a kernel update. In such cases, attempting to load VISA may crash the application.

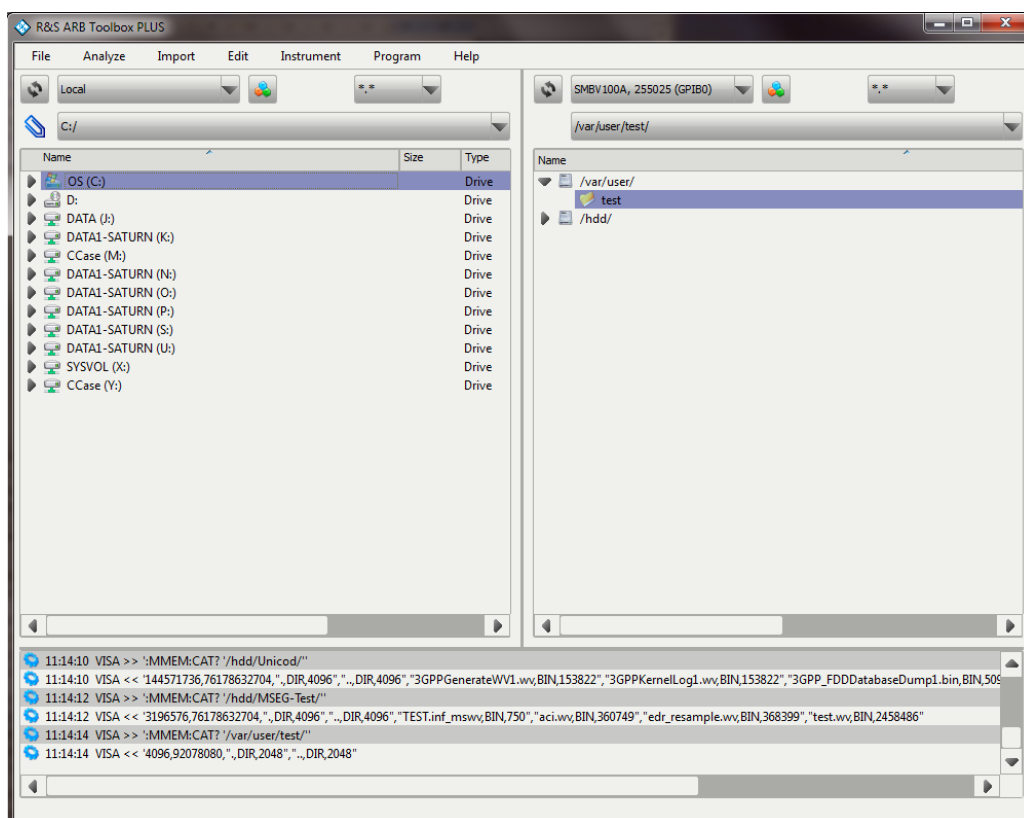
--no-multi-process

The waveform composer detects the number of CPU cores and spawns up to eight parallel processes. This option disables CPU detection and runs a single process only.

This option is useful when the amount of CPU resources is limited and the building process is not possible because of these resource limitations.

4 Getting Started

When the application is started for the very first time, the workspace is divided into a left and a right file browser that shows content from the local file system. The workspace area at the bottom of the panel displays program messages, warnings and errors. These messages are for informational purposes only.



By default, both browsers show the local file system. Drive and directory items can be expanded by clicking the small arrows next to the items icons.

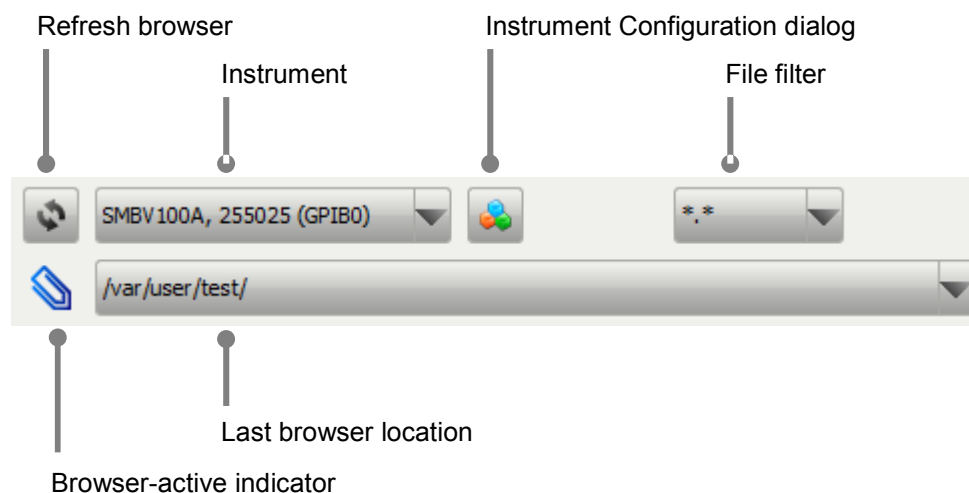
A right mouse click on an item opens a context menu with all available options for the item. These options are described later in this document. Additionally, all available options can be accessed via the applications menu bar. Options that do not fit the selected item are dimmed in the menu bar.

Each of the file browsers can be operated on the local file system or on the remote file system of any supported Rohde & Schwarz instrument. The remote file system browsers access the instrument via SCPI mass memory commands. Both browsers operate independently with one exception: The same instrument cannot be used simultaneously in both browsers.

Drag and drop is supported between the two browsers. The software supports the copying of files and of entire folder structures between local and instrument file systems and between two instrument file systems.

Drag and drop does not currently support multiple selections, nor does it support operations between two local file systems.

Each of the two browsers provides a set of navigation controls that are located above the browser windows.



Instrument

The instrument control sets the file browser operating mode to either the local file system or the instrument file system. If an instrument becomes unavailable, the associated browser is automatically switched back to local file system mode.

File filter

The files shown in the file browser can be restricted to certain file types.

Browser active indicator

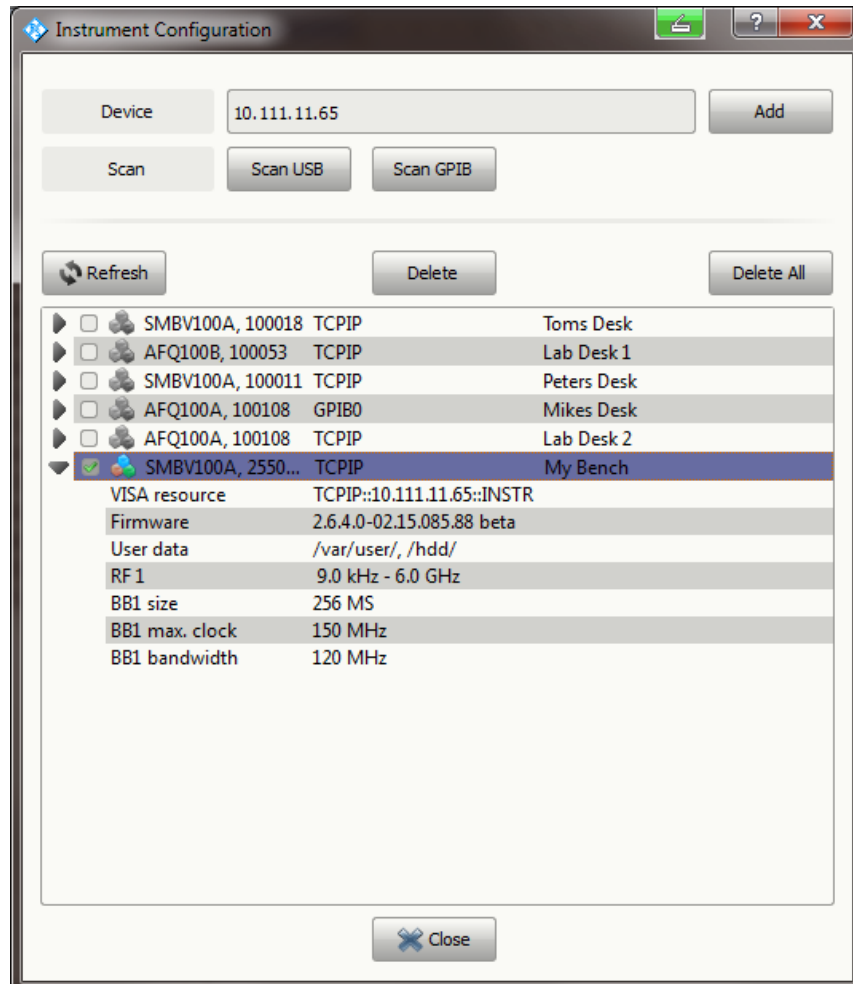
The menu bar items are activated depending on the item selected in the file browser. The active indicator displays which file browser is currently selected and determines the state of the menu bar entries.

Last browser location

This field contains the recently visited locations for the associated file browser and can be used to go back to any of these locations.

5 Configuring Instruments

To use the file browsers with remotely connected instruments, these instrument connections must first be configured. This is done with the Instrument Configuration dialog by selecting *Instrument* → *Configure* from the menu bar.



The section at the top of the dialog box contains controls for adding instruments by manually entering them or by scanning the local USB or GPIB bus.

The GPIB scan is limited to the first GPIB card that is installed (GPIB0).

The lower section of the dialog box contains the list of all known and previously configured instruments. This list contains the instrument, its remote control interface and its instrument properties as well as a checkbox that enables the instrument to be used with the file browsers. Disabling an instrument in the list is useful if it is temporarily unavailable but should not be deleted from the list. If an instrument is deselected, and it is currently being used in one of the browser windows, the associated browser window is set to the local file system mode.

Comment

An optional comment can be added to each instrument in the list. A double click on the instrument name opens the edit dialog for the comment field. Comments can be used for explanatory purposes, and they do not affect instrument communications.

Add

Adding an instrument manually requires entry of the instrument's host name or IP address, or a complete VISA resource string. For instruments connected via LAN, the host name is usually the instrument name followed by the serial number – for example: rssmu200a100123. Typical examples are listed below:

IP address:	10.111.10.123
Host name:	rssmu200a255123
VISA resource string:	TCPIP::10.111.10.123::INSTR GPIB0::28::INSTR



Firewalls

Please note that firewalls or system settings may prevent LAN access to the instrument. ARB Toolbox PLUS tries to detect the availability of required TCP/IP ports prior to attempting to open the VISA link. Error messages are displayed in the program message area.

Scan GPIB

Scans the local GPIB bus for available instruments and adds the detected instruments to the list.

Scan USB

Scans for valid instruments that are connected via USB.

Refresh

All available instruments are marked with a colored icon, whereas unavailable instruments use a dimmed icon. Available instrument nodes also provide additional instrument information when the node is expanded. The Refresh button updates the status of all listed instruments.

Delete

The Delete button removes the selected instrument from the list. If the selected instrument is currently used in one of the browser windows, the associated browser is set to local file system mode.

Delete All

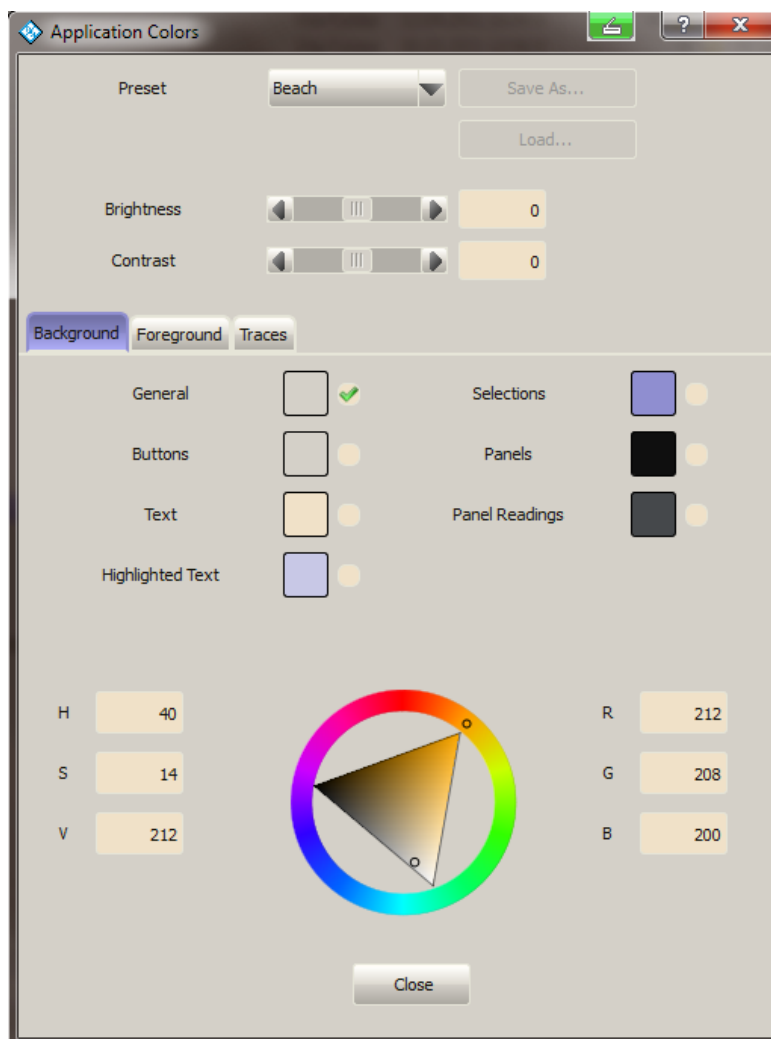
This button clears the entire instrument list. Both browser windows are set back to the local file system mode.

The same instrument can be added multiple times using different hardware interfaces. For example, an instrument can be added using a GPIB connection and a USB connection. The file browsers can then be set for using the instrument with either of these interfaces.

6 Defining the Application Colors

The application colors can be changed globally using the Application Colors dialog. Access this dialog from the menu bar under *Program* → *Colors*.

All color changes are applied immediately in all application windows. It is therefore possible to open windows, such as the waveform viewer, and to observe the color change.



Preset

The entire application can be set to one of the predefined color schemes or to a user-defined color set.

Save As...

This button saves the user color scheme to a file.

Load...

This button loads a color scheme from a file and replaces the current user color set.

Brightness

The brightness control changes the brightness for the entire application. Changing the brightness setting does not affect any of the user's color definitions.

Contrast

The contrast control changes the contrast setting for the entire application. Increasing the contrast reduces the brightness of background colors and increases the brightness of foreground colors. Changing the contrast does not affect any of the user's color definitions.

Color tiles

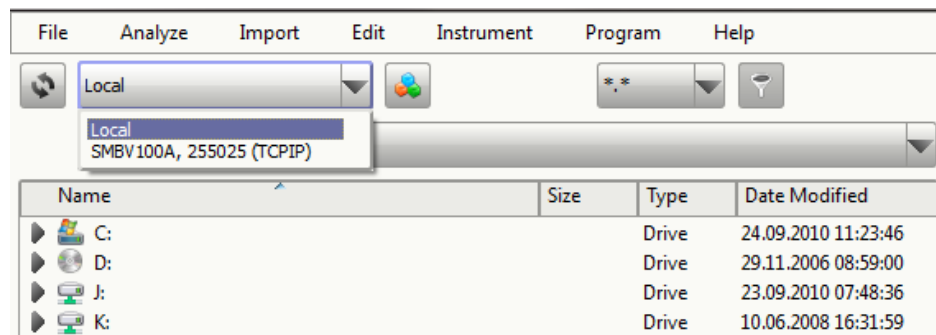
The small colored tiles represent the color of the individual elements. One of these tiles can be selected for editing using the HSV color controls.

HSV color control

The application uses the HSV color model for defining the application colors. This color model uses hue, saturation and value instead of red, green and blue components. Hue represents the angle on the color wheel between 0° and 360°. This value is meaningless for non-chromatic colors, e.g. gray. The saturation is set in the range between 0 and 255; it defines how strong the color is. Grayish colors have very low saturation, whereas strong colors use high saturation values. The value defines the lightness; this parameter is also set between 0 and 255. The brighter the color is, the higher the value.

7 Using the Browsers

Both browsers can be operated in either the local file system mode or the remote file system mode. The operating mode is set using the control at the top of each browser. It always shows the "Local" entry as well as all available instruments.



Local file system

In local file system mode, the browser shows four columns that contain the item name, size and type along with the file modification date. By default, all entries are sorted by name in ascending order. Folders are always listed first. On a Microsoft Windows-based system, the root nodes are the available drives (e.g. "C:" or "D:"). Linux-based systems use the file system root "/" as the root node. The icons used in the tree are the regular operating system icons.

Remote file system

The remote file system contains three columns with the name, size and item type. By default, all entries are sorted by name in ascending order. Folders are listed first. The root nodes depend on the instrument. Microsoft Windows-based instruments usually use "D:" as the root node for user data. Linux-based instruments provide "/var/user/" for user data. If an additional hard drive is present, the "/hdd/" node becomes available. The icons are internally defined and depend on the item type.

A right mouse click on an item in one of the browser windows opens a context menu that contains useful options for this item. The context menu actions therefore depend on the file system mode (local or remote) as well as on the selected item (file, folder, type).

7.1 Local File System Context Menu

The selection of menu entries that is available in the context menu depends on the item that is currently selected in the file browser. The following section lists the menu entries that are available for files and folders.

7.1.1 Folder Options

The menu entries listed below are available when a folder has been selected in one of the file browsers. This folder is shown in the "recent locations" control above the file browser. The blue paper clip indicates which file browser is currently active.



Most menu entries are also available in the application's main menu bar.

Set As Default Folder

Sets the current folder as the default folder. This folder is opened when the application starts up the next time. This option is useful when working with local files that are always located in the same folder.

Create Folder

Creates a new folder inside the currently selected folder. The following characters are not allowed as part of the folder name: * # + / \ & ' " ? %. The folder cannot be created if another entry with the same name already exists inside the selected folder.

Rename

Renames the selected folder. The following characters are not allowed as part of the folder name: * # + / \ & ' " ? %. The folder cannot be renamed if another entry with the same name already exists inside the selected folder.

Delete

Deletes the selected folder if it is empty. If the folder contains entries, the user is asked if the folder and all its entries should be removed.

Create Signal

Starts the signal creation module. This module allows generation of many analog modulated waveforms, such as AM, FM, PM, Pulse, Multi Carrier, and Noise. A separate section in this manual describes this module in greater detail.

Import From Analyzer

Starts the import module for the spectrum analyzer data. This module connects to a spectrum analyzer, captures I/Q data and saves this data as a waveform file in the current folder. A separate section in this manual describes this module in greater detail.

Composer

This action starts the waveform composer module. This module is used to combine multiple waveforms to form a single new waveform. A separate section in this manual describes this module in greater detail.

7.1.2 File Options

Waveform Info

This menu item is only available when a waveform file (.wv) is selected. The waveform information module evaluates information from the waveform file, such as the clock rate, number of samples, crest factor, playtime, and comment.

View

This menu item starts the waveform viewer module and is only available when a waveform file (.wv) is selected. The viewer reads in all of the waveform data and displays I and Q data, the spectrum and a constellation diagram of a signal section or of the entire waveform. A separate section in this manual describes the waveform viewer in greater detail.

Import Data

This menu item is available for all files. It starts the data import module. This module converts binary or text data into a Rohde & Schwarz waveform file.

Import MATLAB

This menu item is only available for files that have the ".mat" ending. It starts the MATLAB data conversion module, which displays the variables contained in a MATLAB .mat file and allows the user to select one 1xN or Nx1 complex double array for conversion into a Rohde & Schwarz waveform file.

Import RIQ

This menu item is only available for files that have the ".riq" ending. It starts the RIQ data conversion module, which converts data streams that have been captured by the R&S® PR100 and saved on its memory card.

Import WAV

This menu item is only available for files that have the ".wav" ending. It starts the WAV file conversion module, which converts data that has been saved by the R&S® EM100-Control software.

Resample

This menu item starts the resampling module and is only available if a waveform (.wav) file is selected. This module is used to resample a signal to a given clock rate or sample count. The resampling sequence contains the following steps:

- ▶ Read waveform data from file.
- ▶ Resample to target clock rate or sample count.
- ▶ Rescale to the same peak power value.
- ▶ Write new waveform file to disk.

The resampling algorithm uses a lowpass filter with a cutoff frequency of 0.45 times the sample rate.

Filter

This menu item starts the filter module and is only available when a waveform file (.wav) is selected. This module provides a configurable lowpass filter that can be used for limiting the signal bandwidth. The filter sequence contains the following steps:

- ▶ Read waveform data from file.
- ▶ Filter waveform data.
- ▶ Rescale to the same peak power value.
- ▶ Write new waveform file to disk.

Level

This menu item starts the level adjustment module and is only available when a waveform file (.wv) is selected. The module is used to change the waveform's RMS signal level based on a user-definable signal section.

Edit Markers

This menu item starts the marker editor module and is only available when a waveform file (.wv) is selected. The marker editor is used to edit the marker traces graphically.

Composer

This action starts the waveform composer module and is only available when a composer settings file (.cms) is selected. This module is used to generate complex multicarrier scenarios.

7.2 Remote File System Context Menu

Which menu items are available in the context menu depends on the currently selected entry. The following section lists the available menu items for a selected folder or file entry in a file browser that is set to remote file system mode.

7.2.1 Folder Options

Set As Default Folder

Sets the currently selected folder as the default folder. This folder is always opened by default when this instrument is used with one of the browsers.

Create Folder

Creates a new folder inside the currently selected folder. The following characters are not allowed as part of the folder name: * # + / \ & ' " ? %. The folder cannot be created if another entry with the same name already exists inside the selected folder.

Rename

Renames the selected folder. The following characters are not allowed as part of the folder name: * # + / \ & ' " ? %. The folder cannot be renamed if another entry with the same name already exists inside the selected folder.

Delete

Deletes the selected folder and all its subfolders and files. To prevent accidental deletions, the user is asked if the folder and all its subfolders and items should be deleted.

7.2.2 File Options**Run!**

This menu item starts the selected waveform (.wv) in the instrument's ARB. When used with a two-path instrument, the waveform is started in the first path.

Create Folder

Creates a new folder inside the folder where the currently selected file is located. The following characters are not allowed as part of the folder name: * # + / \ & ' " ? %. The folder cannot be created if another entry with the same name already exists inside the selected folder.

Rename

Renames the selected file. The following characters are not allowed as part of the file name: * # + / \ & ' " ? %. The file cannot be renamed if another entry with the same name already exists inside the current folder.

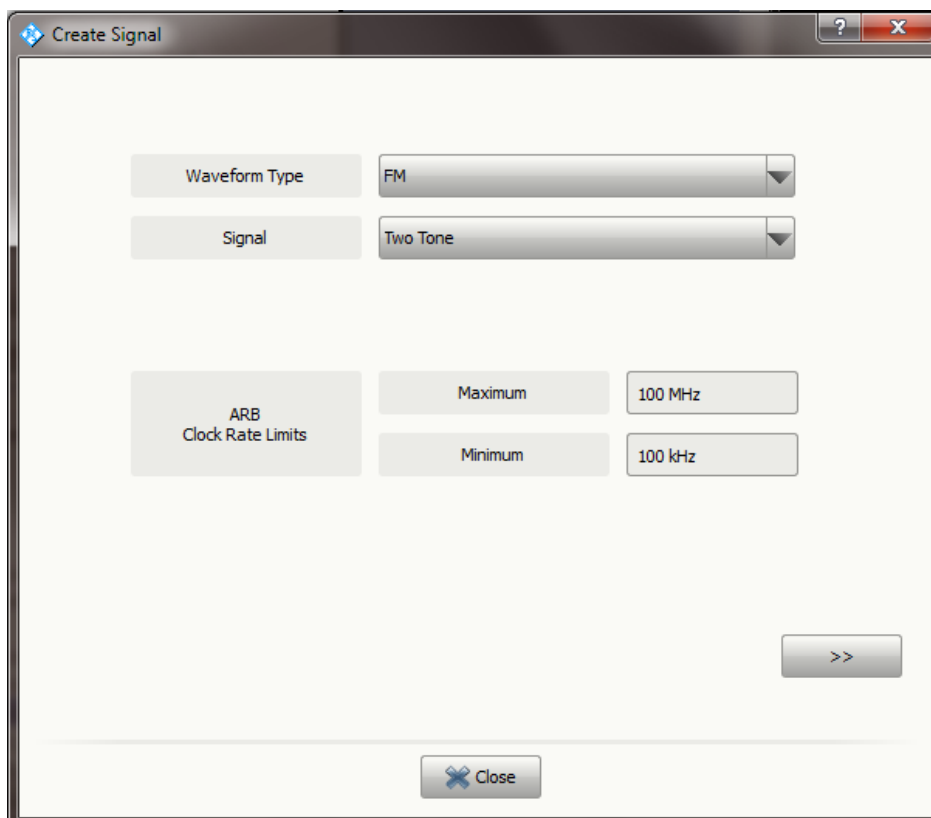
Delete

Deletes the selected entry.

8 The Signal Creation Module

The signal creation module is started via the context menu in the local file-system browser. This module is used to build various analog modulated signals, such as AM, FM, PM and noise.

The signal creation wizard guides the user step by step through the configuration and waveform building process.

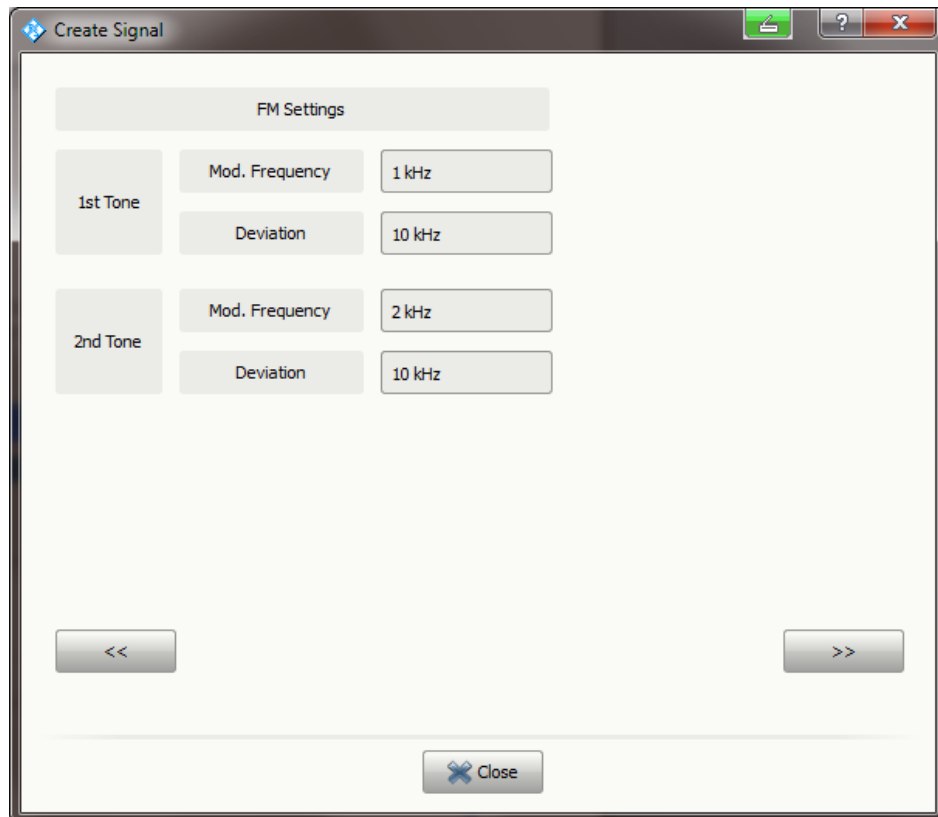


The first page of the wizard configures the signal type as well as the minimum and maximum permissible ARB clock rate. Please see your instrument's operating manual for information about the ARB clock rate limits.

The final waveform's ARB clock rate is determined by the signal creation wizard. It is not possible for the user to set this rate directly.

The Next (>>) button advances the wizard to the second page, where the signal type can be specified in more detail.

The second page of the signal creation wizards sets all parameters required for the selected signal type. As a result, the content of this page depend on the signal type that has been set on the first page.

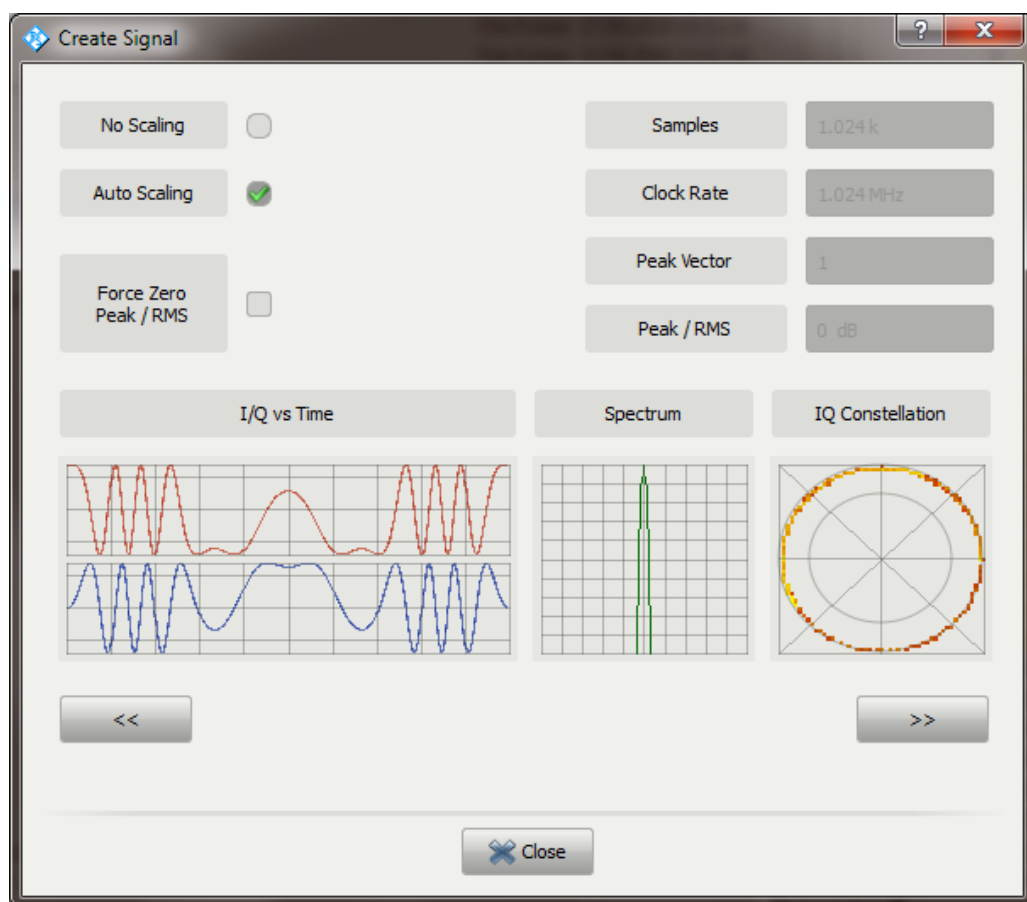


All entry fields on the settings panel provide tool tips with information about permissible value ranges for the entry field.

After editing all parameters, clicking the Next (>>) button advances to the waveform preview panel.

The Previous (<<) button is used to go back to the first page of the signal creation wizard. Settings made on this page are saved and restored if the page is activated again.

The third page of the signal creation wizard shows a preview of the waveform that is generated.



For large waveforms, the preview panel limits the view to the beginning portion of the waveform.

Scaling

The output waveform can be generated using two different level-scaling modes. The "No Scaling" selection leaves the signal amplitude untouched. This could lead to low signal levels or clipping, and it is only recommended for specific applications. The "Auto Scaling" mode scales the waveform so that it perfectly fits the 16 bit dynamic range of the instrument's ARB. No clipping is performed when auto scaling is selected.

Force Zero Peak/RMS

ARB Toolbox PLUS calculates the peak power and RMS power for the entire waveform and saves this information as part of the waveform file. The generator uses these values to ensure correct leveling and to inform the user about over-range conditions. The Peak/RMS ratio defines the difference between the power level that is set by the user and the peak power generated by the instrument. For example, if the Peak/RMS ratio is 10 dB and the user sets an average power level of +15 dBm, signal peaks of 25 dBm will occur.

For most signals, it is a good idea for the user to control the waveform's RMS power. For some signals, such as pulses, the RMS signal level is of little interest. In this case, the user controls the top pulse power and forces the Peak/RMS value to be zero.

Samples

The indicator field is read only. It displays the number of samples that the final waveform contains. An exclamation mark warns the user if the sample count falls below 512 samples. In this case, the waveform length might violate the minimum required ARB file size.

Clock Rate

The indicator field is read-only. It shows the final waveform's clock rate. The clock rate is selected by the application, and it fits into the range that is established by the minimum and maximum permissible ARB clock rates.

Peak Vector

The indicator field is read-only. It shows the peak magnitude of the I/Q samples that are evaluated in the preview window. To avoid signal clipping, the number must not exceed 1.0. If auto scaling has been selected, the application will first create the signal and then scale it to a peak vector of exactly 1.0.

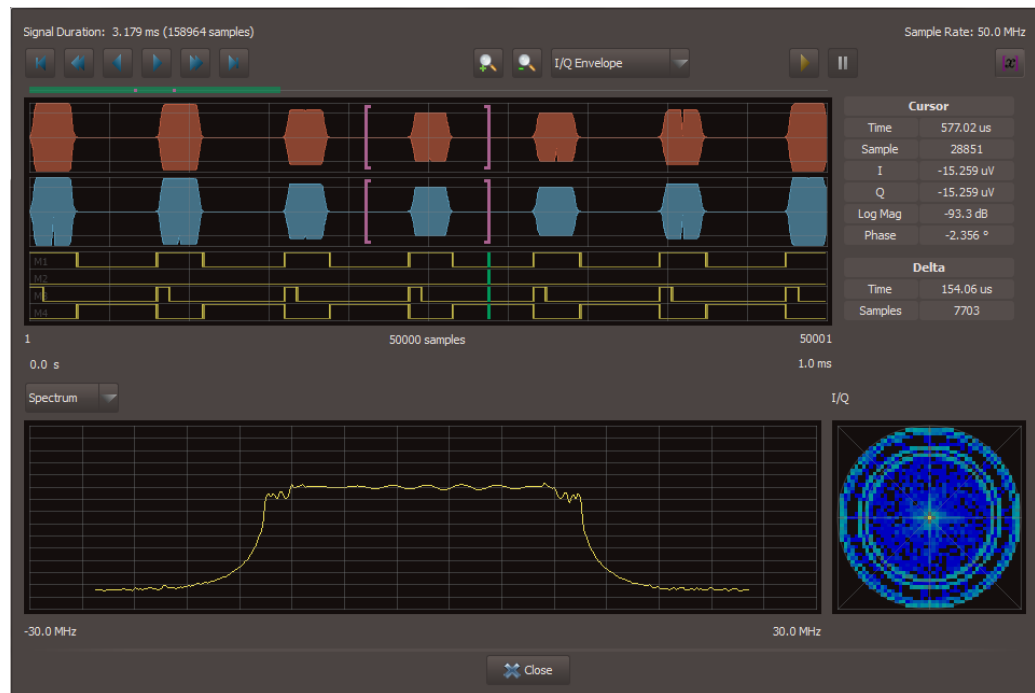
Peak / RMS

The indicator field is read-only. It shows the relation between the peak power and the RMS power of the evaluated waveform section. The ratio is expressed in dB.

If the preview shows satisfactory results, use the Next (>>) button to advance the signal creation wizard to the waveform file settings page. This page sets the output file name, provides optional comment information, and builds the output file.

9 The Waveform Viewer

Start the waveform viewer module via the context menu for a waveform file entry in the local file-system browser. The viewer reads the entire waveform data and provides three display sections on one single panel: The time domain view, the spectrum and the I/Q constellation.



Navigation controls

The number of signal samples that are displayed in the viewport can be set between 50 and 100 000. In most cases, the viewport window is used to display only a section of the entire waveform. The navigation controls on the left side above the viewport window step forward or backward to the beginning or end of the waveform.

Timeline

The timeline is located above the viewport window. It provides multiple functions. The length of the timeline symbolizes the play time of the entire waveform. The green section marks the area of the waveform that is currently visible in the viewport. When the mouse cursor is moved close to the timeline, a red dot indicates the time that corresponds to the mouse position. This time is also displayed numerically above the timeline. A left mouse click adjusts the viewport center position to the selected time.

Zooming

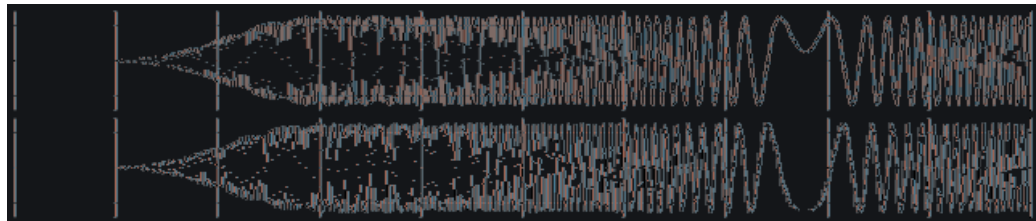
The number of samples shown in the viewport window is controlled by two zoom buttons. The zoom range is always defined in samples. It can be set to a value between 50 and 100 000.

View mode

The window size and the screen resolution limit the number of screen points in the time domain display. This also limits the resolution at which level and time information is represented. Particularly when a large signal section must be displayed, one single screen point may contain the information from a large number of signal samples. In this case, view mode can control the information that is displayed.

I/Q Envelope

The "I/Q Envelope" mode displays the I and Q trace on a linear scale in the range between -1.0 and $+1.0$. The lower section contains the four digital marker traces M1 to M4. Depending on the zoom level, each screen point may represent multiple signal samples. If so, the area between the minimum and maximum value is filled with a semi-transparent trace color.



Log Mag Envelope

The "Log Mag Envelope" mode displays the logarithmic signal amplitude on a 100 dB scale. The lower section contains the four digital marker traces M1 to M4. When one screen point represents multiple signal samples, the area between the minimum and maximum value is filled with a semi-transparent trace color.

Log Mag Average

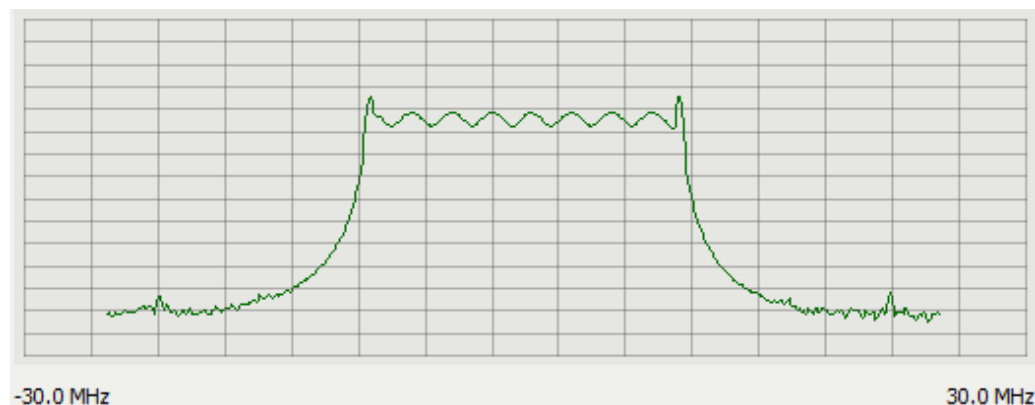
In contrast to the "Log Mag Envelope" mode, the area between the minimum and maximum value is not filled in this mode. Instead, the average value is displayed when multiple samples are represented by one screen point.

Lin Mag Average

The "Lin Mag Average" mode is similar to the "Log Mag Average" mode, but it uses a linear scale between zero and one.

Spectrum

The spectrum panel shows the FFT of the signal portion that is visible in the viewport. The FFT scale has a range of 150 dB, and it is sufficient to cover the 16 bit resolution provided by the vector signal generator's internal ARB (96 dB). The frequency scale ranges from $-1/2$ to $+1/2$ of the waveform sample rate.

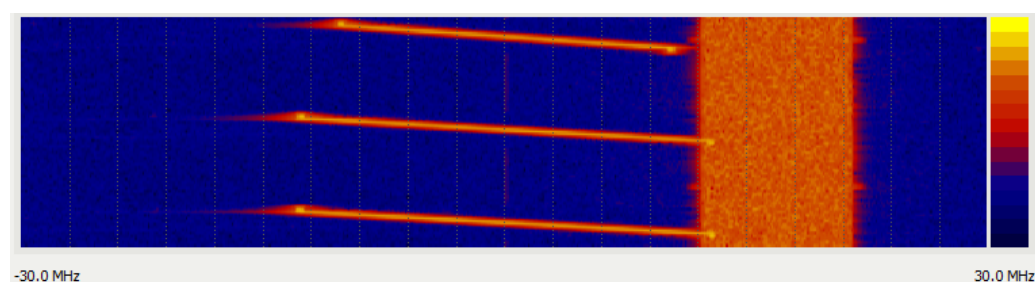


The FFT algorithm processes the waveform data in sections of 512 points. Each section is multiplied with a raised cosine window. Adjacent sections overlap each other by half the section length. After all FFT windows are calculated, the average of all results is created and displayed.

Care must be taken when short signal portions are to be evaluated. In this case, the windowing function weights the beginning and end of the waveform less than the center portion.

Waterfall

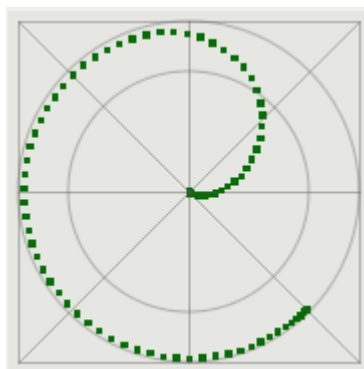
The waterfall panel shows the spectrum of a signal portion as a function of time. Each line in the waterfall diagram represents one FFT with 512 points.



The waterfall diagram uses a color scale to represent a dynamic range of 150 dB.

I/Q constellation plot

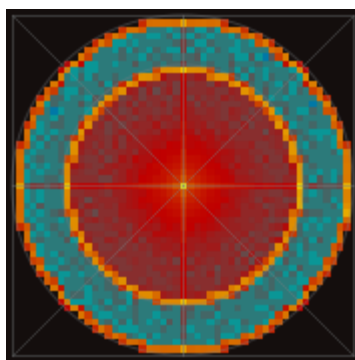
The I/Q constellation plot operates in two different modes depending on the number of samples visible in the viewport. When the number of samples is relatively low, the panel shows the I/Q samples as dots.



The display covers the range between -1.0 and $+1.0$ for I and Q. The outer circle marks the vector length of 1.0. Samples located outside of this circle are subject to clipping when the waveform is played back in the ARB.

The inner circle marks the vector length $1/\sqrt{2}$. Samples located on this circle generate an output power of 3 dB below the maximum.

If a large number of samples are to be evaluated, the display mode changes from a single sample display to a density plot display. In this operating mode, the display is divided into a grid of 50 by 50 points, and the number of samples that fall within each point is counted. Finally, the sample counts are translated to:

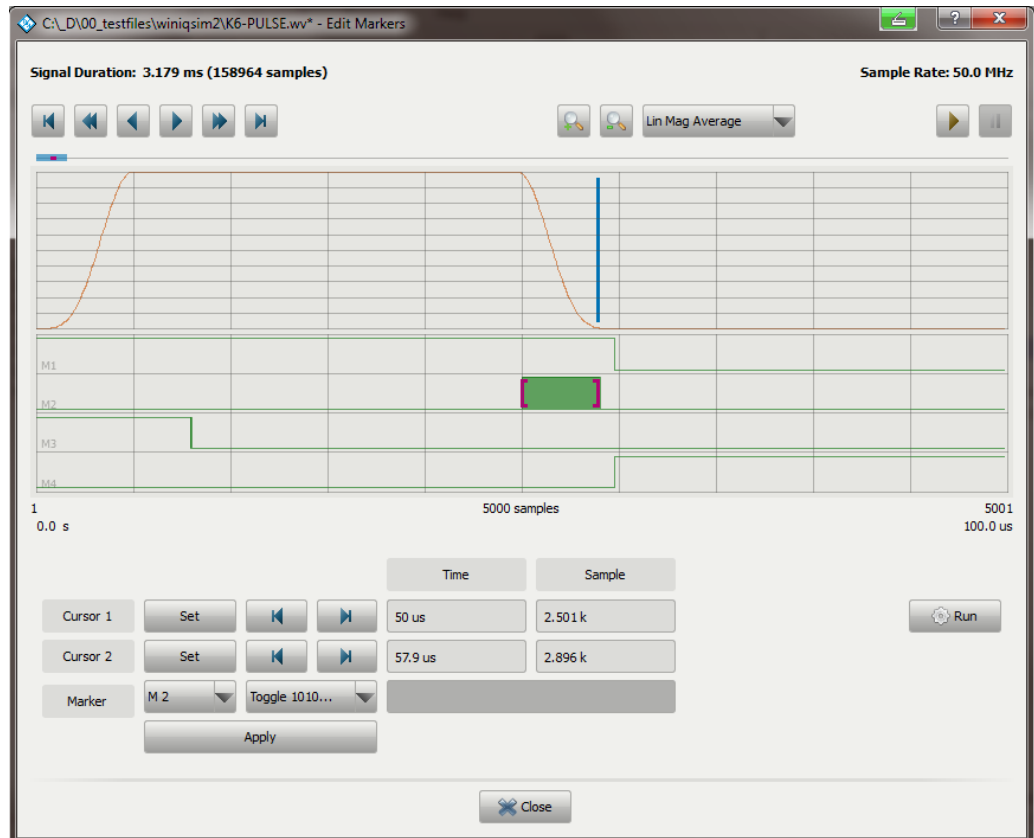


Play / stop

The play button starts the graphical waveform playback. In this mode, the waveform section is shifted in time by one half of a display section every 100 ms. If CPU performance is insufficient for this, the update rate is decreased to 200 ms.

10 The Marker Editor

Start the marker editor module via the context menu for a waveform file entry in the local file-system browser. The marker editor reads all the waveform data and provides a view of the I/Q data and the marker traces. Additional controls in the lower panel area are used to modify the marker traces.



Navigation controls, zooming, view mode, timeline, play

Please see the Waveform Viewer section in this manual.

Cursors

The viewport provides three cursors. The primary cursor is indicated by a single line and is located in the I/Q data area. It marks the center point for all zoom operations. The other two cursors are indicated by brackets and are located in the marker area. They define the beginning and end point for all marker operations. The "Set" buttons set the marker brackets to the current cursor position.

Marker bracket controls

Both marker brackets can also be set numerically using the controls located below the viewport window. All marker operations are applied to the area defined by the two brackets, including the boundaries.

Marker modification

The marker modifications are applied between the two marker brackets, including the boundaries. The modification controls define the modification type and the affected marker traces. The "Apply" button performs the change immediately.



The marker change is executed immediately and without confirmation. No undo functionality is provided, because this requires the buffering of an extremely large amount of data. Instead, all changes are applied to temporary waveform data. The final waveform is built from this data when the "Run" button is pressed. If unwanted marker changes have been made, it is sufficient to close the panel and restart.

Run

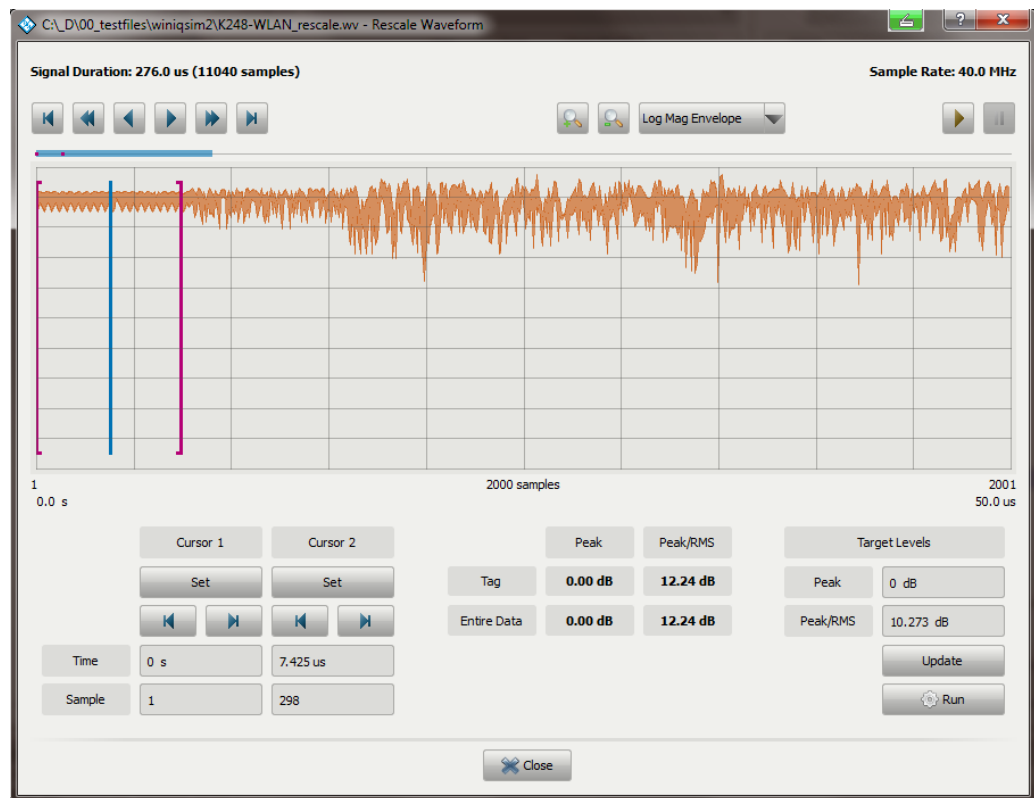
The "Run" button builds a new waveform from the I/Q data and the modified marker data.

Close

The button closes the dialog. If changes have been made, the user is queried if the modified data should be saved prior to closing the dialog. Once the panel is closed, all marker changes are lost.

11 The Level Scaling Module

Start the level scaling module via the context menu for a waveform file entry in the local file-system browser. It reads the entire waveform data and provides a view of the I/Q data versus time. Additional controls in the lower section of the panel define the signal portion that is used for calculating the RMS signal level.



Navigation controls, zooming, view mode, timeline, play

Please see the Waveform Viewer section in this manual.

Cursors

The viewport provides three cursors. The primary cursor is indicated by a single line. It marks the center point for all zoom operations. The other two cursors are indicated by brackets. They define the beginning and end point for the RMS level evaluation period. The "Set" buttons set the brackets to the current cursor position.

Numeric bracket controls

Both brackets can also be set numerically by using the controls below the cursor navigation buttons.

Peak and Peak/RMS display

This section shows the Peak and Peak/RMS values based on different sources.

Tag

This information is based on a tag stored in the waveform file. When this information is present, the signal generator will use it for leveling. If the tag is missing, the signal generator evaluates the file content and levels automatically.

Entire Data

This information is calculated from all samples after the file has been read in. For most waveform files, these values are equal to the ones contained in the level tag.

Target levels

These controls contain the Peak and Peak/RMS levels as they will be written to the final waveform file. Both values are initialized with the values determined when the waveform was initially read in. The "Update" button recalculates the Peak/RMS level according to the section defined by the two brackets.

Run

The "Run" button builds a new waveform with the modified Peak and Peak/RMS levels.

Close

This button closes the dialog.

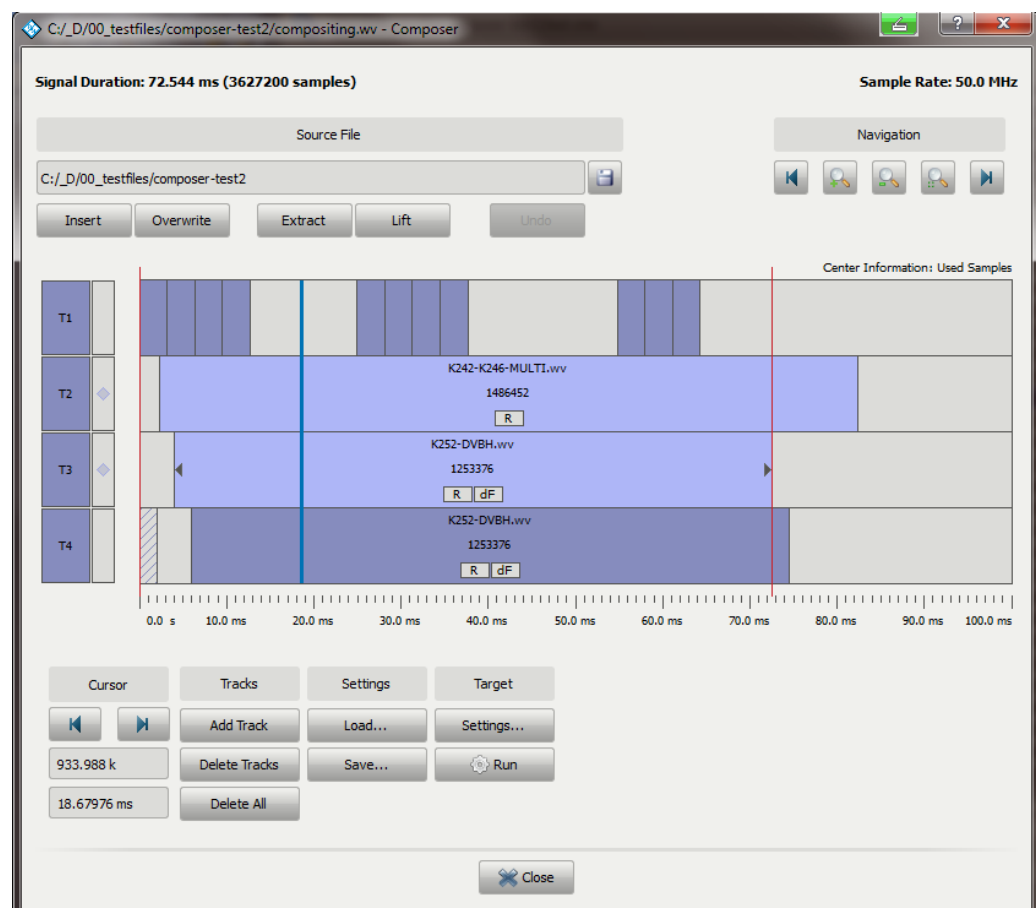
12 The Waveform Composer

Start the waveform composer module via the context menu for a folder entry or a composer settings file entry in the local file-system browser. The waveform composer provides powerful and versatile functionality for building complex multicarrier scenarios.

The main purpose of the composer module is to provide the user with a flexible way for arranging various waveforms in time or in frequency. This is done by arranging waveform segments in up to 16 parallel tracks. The final waveform is built by adding all waveform data from all tracks on one common time scale.

The tracks are provided as placeholders for waveform segments. The track itself does not specify a frequency offset, level or timing. These settings are managed individually for each segment.

Each waveform segment is indicated by a colored section within the track. The section length symbolizes the play time for this segment.



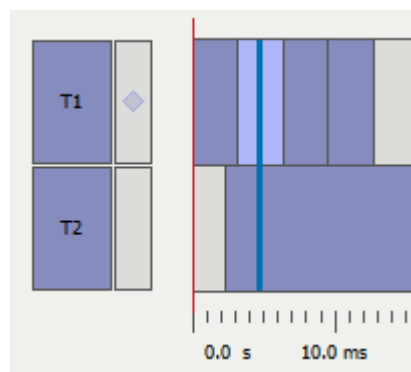
The composer window is divided into four main areas. The upper left area contains the controls required for adding or removing waveforms to or from tracks. The upper right area contains the navigation controls.

The center area shows the graphical representation of the entire waveform composition or a zoomed portion of it. It also provides access to the individual track settings.

The lower composer window area contains controls for various purposes, such as cursor control, track and file management, and target file settings.

12.1 The Track Editor

The track editor provides two major functions. First, it visualizes the entire waveform composition and provides information about segment settings, such as the frequency offsets, level attenuation and timing. Second, waveform segment parameters can be changed by double-clicking a segment in the editor.



The left side of the track editor contains two control fields for each track. The larger field contains the track number and indicates if the track is evaluated during the creation of the final waveform. A colored field symbolizes that this track is active and evaluated. The activation state can be toggled with a left mouse click anywhere in the field.

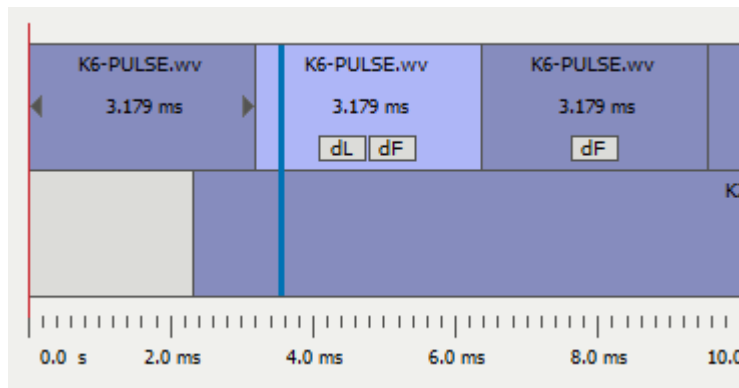
The diamond in the smaller field on the right side is the track selection flag. It marks tracks that are affected by edit operations. In addition, the segment selection works by combining the flag with the current cursor position. Only segments from selected tracks can be marked using the cursor line. These segments appear in a slightly brighter segment color.

Insert operations work on all selected tracks. It is therefore possible to add the same waveform into multiple tracks at a common position in time.

Clicking into the smaller field using the left mouse button toggles the track selection state.

12.1.1 Center Information

Each waveform segment is symbolized by a colored area. The position of this area corresponds to the location in the output waveform. Depending on the zoom level, three lines of textual information are provided within each segment.



The first line contains the file name of the waveform segment. The file name does not contain the full path, and it may be omitted if the segment section becomes too short.

The content of the second line is user-selectable. It provides one of the following information:

- ▶ **Used Samples**
This is the number of samples that are taken from the source waveform. The waveform is truncated at the beginning or the end if the number of used samples is less than the total number of waveform samples.
- ▶ **First Sample**
This is the number of the first sample that is taken from the source waveform. The waveform is truncated at the beginning if the first sample is greater than zero.
- ▶ **Frequency Offset**
This is the frequency offset that is set for the segment. Setting a frequency offset shifts the signal away from the carrier frequency. The frequency offset can be positive or negative. If a frequency offset is set, the segment gets marked with the "dF" symbol.
- ▶ **Attenuation**
This is the level attenuation set for the segment. Setting a level offset reduces the signal level of this segment in the output waveform. Positive values reduce the signal level. If a level offset is set, the segment gets marked with the "dL" symbol.
- ▶ **Play Time**
This is the segment's play time based on the source clock rate and the number of used samples.

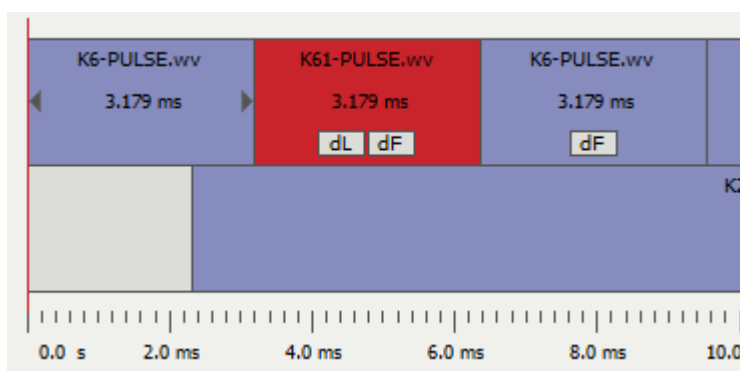
- ▶ **Clock Rate**
This is the source clock rate of the waveform used in the segment. The source clock rate may differ from the output waveform's clock rate. In this case, resampling is required, and the segment is marked with an "R" symbol.
- ▶ **Start Sample**
This is the start sample of the segment in the output waveform. The start sample is related to the output waveform's clock rate.
- ▶ **Start Time**
This is the start time of the segment in the output waveform.

The third row contains icons that indicate certain segment states. The following icons are used:

- ▶ **R** Resampling is required for the segment. This indicates that the source clock rate differs from the output clock rate.
- ▶ **dF** The segment is frequency-shifted.
- ▶ **dF !** The segment is frequency-shifted. Additionally, the limit set for automatic adjustment of the frequency shift cannot be met.
- ▶ **dL** The segment is attenuated.

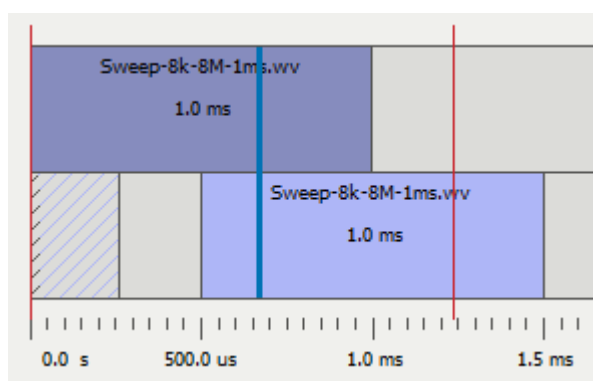
12.1.2 Offline Files

Each segment references a waveform file containing the I/Q and marker data that is added to the output waveform during the building process. The waveform file is specified using a path relative to the composer settings file. If the waveform file becomes unavailable, the corresponding segment is highlighted in a different color. Waveform scenarios that contain unavailable segments cannot be built.



12.1.3 Wrapped-Around Segments

The beginning and end points of the target waveform are marked by thin lines. The beginning is always located on the left side at sample zero. The end point can be determined automatically or set by the user. By default, waveform segments that reach beyond the end of the target waveform are truncated. In some applications, however, it is better if the end is not truncated; instead, it should wrap around to the beginning of the target waveform. These wrapped-around segments are indicated by a hatched section at the beginning of the composition. This section cannot be selected directly by the cursor line or the mouse. Instead the "true" segment position must be used.



The wrap-around state is defined in the Segment Settings dialog. This dialog can be invoked by double-clicking any part of the segment.

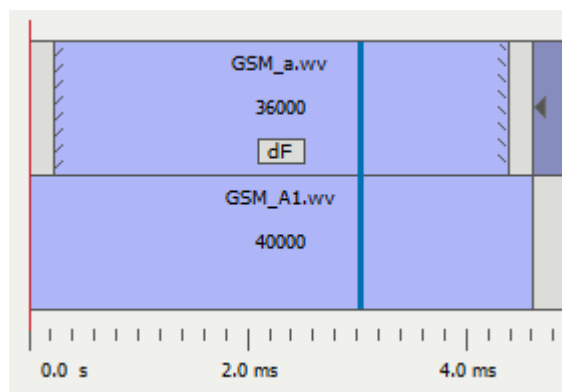
Entire segments, or even multiple segments in a row, can be wrapped around to the beginning of the waveform.

12.1.4 Truncation

Waveform segments can be truncated at the beginning or the end. This is useful when only a fraction of the signal should be used in the output signal.

The truncation is defined in the Segment Settings dialog. This dialog can be invoked by double-clicking anywhere in the segment.

When segment truncation occurs, a hatched section marks its location at the beginning or at the end of the segment. The length of the hatched area is independent of the amount of truncation.

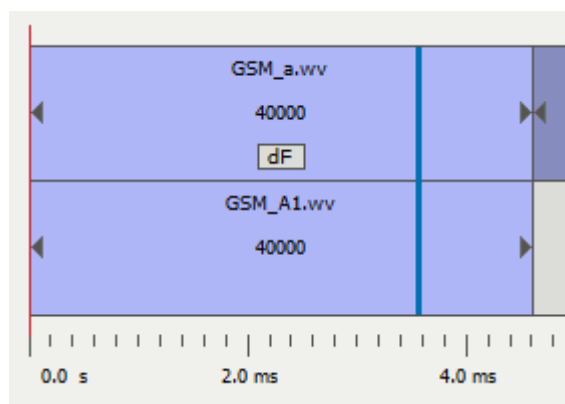


12.1.5 Fade-In and Fade-Out

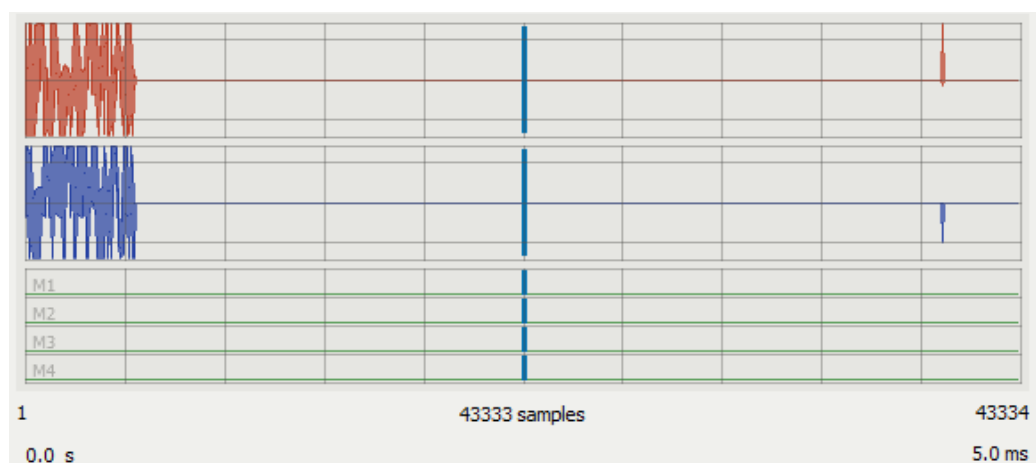
Waveforms containing digital standard signals and originating from R&S® WinIQSIM™ are usually intended for continuous playback. The end of the waveform fits the beginning to avoid spectral regrowth caused by the wrap-around.

If such a waveform is not repeated continuously but used as source for a waveform segment, a small amount of fade-in and fade-out time may be required. Fading the waveform changes the amplitude between zero and the full signal level within the given amount of time.

Waveform fading is indicated by a small arrow at the segment boundaries.



The example waveform below shows one GSM burst originating from R&S® WinIQSIM2™. This burst was added to a track without defining a fade-out time.



It can be seen that a glitch occurs at the end of the GSM waveform (4.6 ms). This glitch is caused by the digital filter that was used when the waveform was generated.

If this waveform is played continuously, there will not be a signal glitch. Instead, the signal ramps up in such a way that the full signal level is available at the beginning of the waveform.

12.1.6 Setting the End Position

The end position of the output waveform is either determined automatically or set by the user. These settings can be entered numerically in the output waveform dialog that is described later in this manual.

An alternative method is to set the end point to the current cursor position. This can be done by invoking the context menu in the track editor and selecting "Set End to Cursor."

12.2 Zooming and Navigation

The track editor provides a primary cursor line that serves as the center point for all zoom operations. Placing the cursor line and turning the mouse's scroll button forward zooms in at the current cursor position. Turning the scroll button backward zooms out.

Zooming is also possible using the three navigation control buttons. The lens + and – buttons zoom in and out at the cursor position. The lens symbol with the bracket sets the view area to fit the entire waveform composition.

The two arrow buttons position the view to the beginning or end of the entire waveform composition.

12.3 Adding and Removing Segments

Adding or removing content is the track editor's main task. The waveform composer provides two operations for adding content and two operations for removing content.

All operations on waveform segments are non-destructive and saved in a database. Therefore, each step can be undone using the "Undo" button.

12.3.1 Cursor Control

Generally, all edit operations are related to the current cursor position. Inserting and overwriting content starts exactly at the cursor position. The sample counting is zero based and starts at index 0 for the first sample.

Pressing the Control key along with the left mouse button snaps the cursor line to the closest segment border of all marked tracks. At the beginning of the composition, the cursor snaps to sample zero. At the border between two adjacent segments, the cursor snaps to the first sample of the second segment. At the end of the composition, the cursor snaps to the sample following the last segment.

Only marked tracks are affected by edit operations. Therefore, the track selection indicators (the little diamonds on the left side) must be set before adding or removing content.

12.3.2 Insert

Inserts the selected waveform at the cursor position in all marked tracks. The insert operation shifts all content following the insert position by exactly the space that the inserted signal requires. When the insert mark is placed within a segment, the segment is split, and the remaining part is shifted beyond the newly inserted segment.

Please note that the insert operation shifts track content by the size of the newly inserted segment. The timing relationship of the tracks may therefore become unsynchronized.

12.3.3 Overwrite

Overwrites the track content of all marked tracks with the selected waveform. Entirely overwritten segments are removed from the scenario. Tracks that get partially overwritten are automatically truncated.

The overwrite operation does not shift content. As a result, it leaves the tracks synchronized.

12.3.4 Extract

Removes the selected segments from all marked tracks and closes the gap for the removed segments by shifting all content following the cursor line. The segments that will be removed are determined by the track selectors (diamonds) and the cursor position.

Please note that the extract operation shifts track content individually depending on the size of the removed segments. Consequently, the timing relationship of the tracks may become unsynchronized after an extract operation.

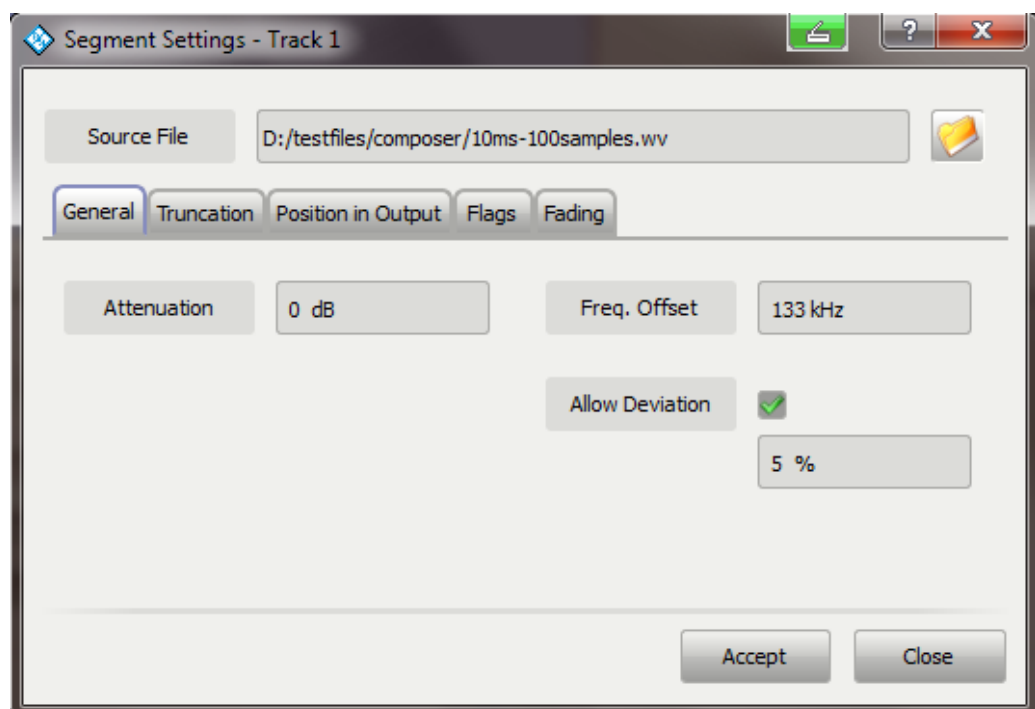
12.3.5 Lift

Lifts the selected segments from all marked tracks and does not close the gap left by the removed segments. The segments being removed are determined by the track selectors (diamonds) and the cursor position.

The lift operation does not shift content. Therefore, it leaves the tracks synchronized.

12.4 Segment Settings

Double-clicking a segment in the track editor opens the Segment Settings dialog. This dialog contains all parameters that affect the current segment and its position in the output waveform. Each segment uses its own individual data set. All changes are added to a database, and they can be undone using the "Undo" button in the track editor.



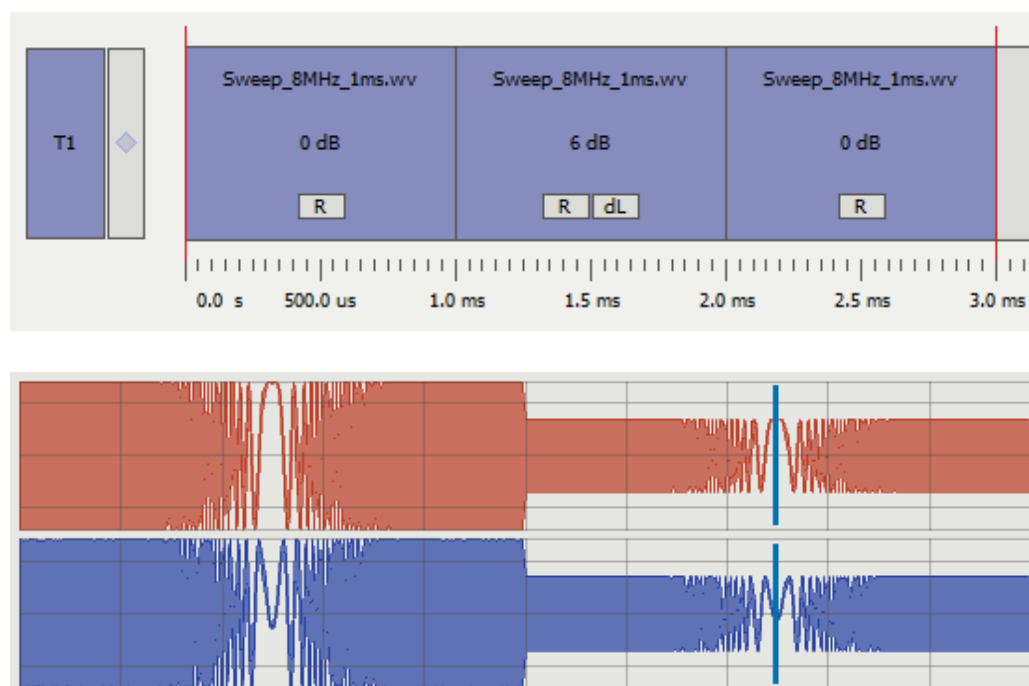
Source File

This is the name of the waveform file associated with the segment. The file name also contains the absolute path but saves a path relative to the composer settings file. It is therefore possible to put the settings file together with the waveform files into one folder structure and then copy everything to a different location.

12.4.1 General Settings

Attenuation

The attenuation reduces the signal level of the segment in the output waveform. A positive value of 6 dB, for example, reduces the RF signal level by 6 dB and the I/Q baseband level to 50 %.



Frequency Offset

The frequency offset shifts the signal in frequency. You can add the same waveform at the same position to multiple tracks and then apply individual frequency offsets. The result is a multicarrier scenario.

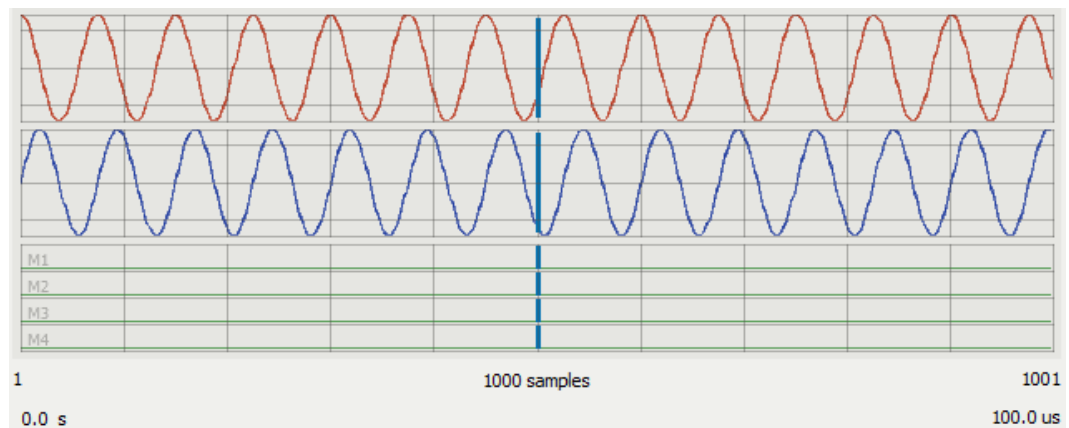


It must be ensured that the target clock rate is large enough for the desired frequency shift and signal bandwidth. A minimum target clock rate of twice the signal bandwidth plus the frequency offset should be used.

Allow Deviation

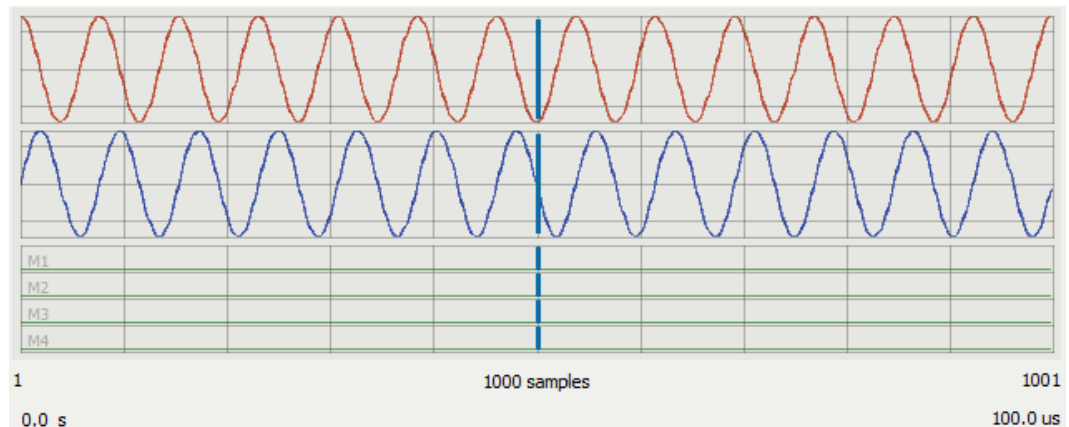
The frequency offset entered by the user causes a constant phase shift between adjacent samples. The overall phase change between the first and the last sample depends on the target clock rate, frequency offset and the number of samples. If this total phase change is not a full multiple of $2\cdot\pi$, the beginning and end phase do not fit, and spectral regrowth can occur.

The figure below shows a CW signal that is frequency-shifted by 133 kHz. The phase at the waveform start does not match the phase at the waveform end. If this waveform were played continuously, spectral regrowth would occur due to this phase step.



This problem can be overcome by allowing the composer to adjust the frequency offset for phase matching between the waveform start and end.

The figure below shows the output signal when a 2.5 % deviation from the set frequency offset is allowed. The resulting frequency offset is 130 kHz.



12.4.2 Truncation

First Sample, Last Sample

By default, all samples from the waveform are used for a segment. Setting the first sample to a value greater than zero truncates the waveform at the beginning. The last sample may be changed to less than the maximum or remaining sample count for cutting away a signal portion from the waveform end.

12.4.3 Position in Output

Start Sample

The start sample sets the number of the first sample for the current segment in the output waveform. The start sample number is related to the target sample rate.

Start Time

The start time sets the point at which the current segment in the output waveform begins.

12.4.4 Flags

Truncate / Wrap Around

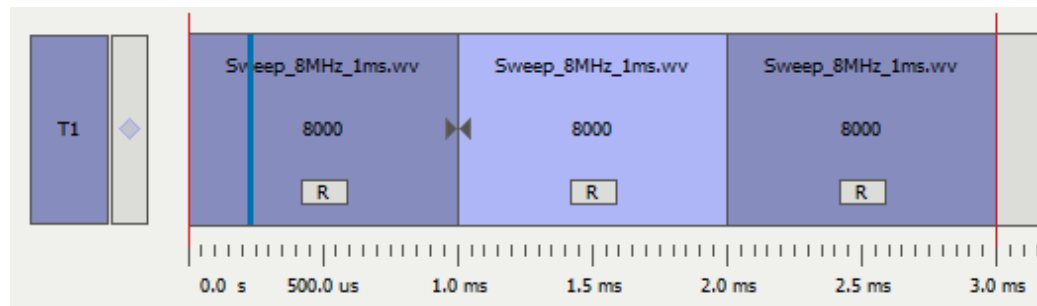
Usually, all segment content beyond the end of the waveform composition is truncated. Setting the segment mode to "Wrap Around" places the data that is beyond the end of the waveform composition at its beginning.

Use Markers

When this flag is enabled, the marker data from the segment waveform is added to the output waveform.

12.4.5 Fade-In and Fade-Out

Fading changes the signal amplitude at the beginning or end of the segment from zero to the full level. This settings is useful for reducing spectral regrowth at the joint between two segments.



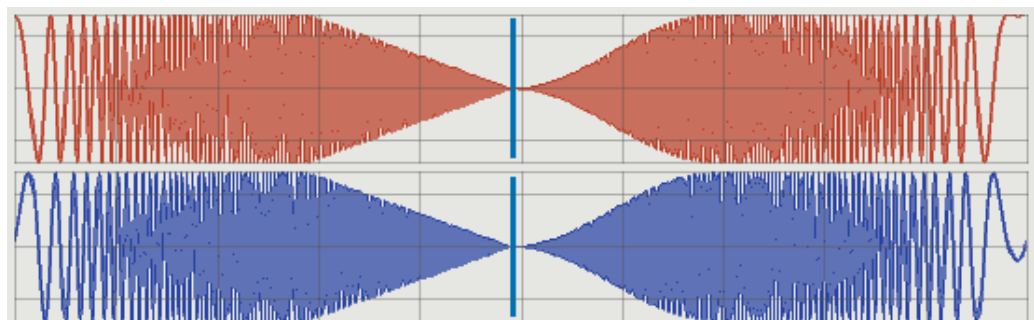
Fading is indicated by a small arrow at the beginning or at the end of the segment. The arrow also symbolizes the direction of the level change.

Time

The period of time used for the level change between zero and full level. Leaving the time at zero disables fading.

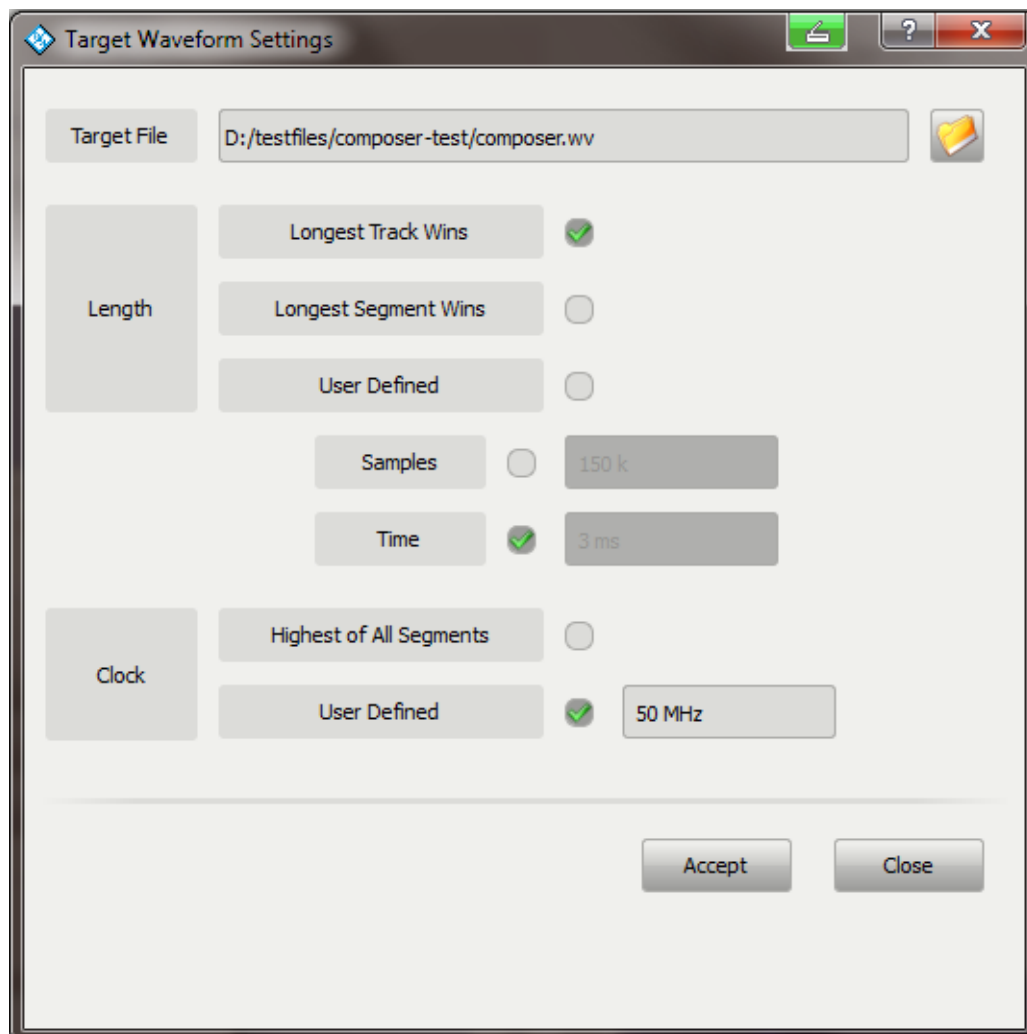
Shape

The shape defines the profile that is used for changing the amplitude between zero and the full level.



12.5 Target Waveform Settings

The target waveform settings specify all parameters related to the waveform that is generated by the composer engine. Besides the target file, the length and clock rate of the waveform can be specified.



Target File

The target file contains the absolute path and the file name of the output file. The path is internally saved relative to the composer settings file. This makes it possible to copy the settings file together with all waveform files to a different location. When this dialog is invoked, the original absolute path gets restored.

Length

The length of the target waveform can be determined automatically or set by the user. All waveform data beyond the end of the waveform gets truncated or is wrapped around to the beginning.

Longest Track Wins

The length of the longest track determines the overall waveform length. This is the default setting, and it is useful in most applications. The length is updated with each editing operation.

Longest Segment Wins

The longest segment in any of the tracks defines the overall waveform length. This setting may be useful when multiple segments are added at the same point in time. The length is updated with each editing operation.

User Defined

In this mode, the length is fixed and set in samples or time. The length does not change with editing operations.

Clock

The target clock rate can be determined automatically or set to a fixed value. Automatic mode is the default setting here. This mode selects the highest of all segment clock rates. This, however, may not be sufficient when frequency offsets are used.

Segments that differ in clock rate require resampling during the building process. These segments are indicated with an "R" symbol in the track editor.

In automatic mode, the target clock rate is automatically adjusted during edit operations.

12.6 Building the Target Waveform

The target waveform is built from the entire scenario by pressing the "Run" button. The result is a single waveform file that contains the content specified in the composer window. Starting a waveform build is only possible if all waveform files are available and no segment is marked as offline. The building process consists mainly of the following steps:

- ▶ Read and analyze all source waveforms.
- ▶ Resample segments to the target clock rate where necessary.
- ▶ Frequency-shift segments where necessary.
- ▶ Assemble target waveform from all segments.
- ▶ Rescale and save target waveform.

At the beginning of the build process, the number of available CPU cores is detected. ARB Toolbox PLUS will spawn up to eight parallel processes for steps that can be carried out simultaneously. The build process will create several temporary files per CPU process in the system's temporary directory. If the number of system resources is limited and errors occur during the build process, parallel processing may be disabled using the following command line option:

```
--no-multi-process
```

The build process can be started at any time and repeated multiple times. Existing target waveforms are replaced by newer ones.

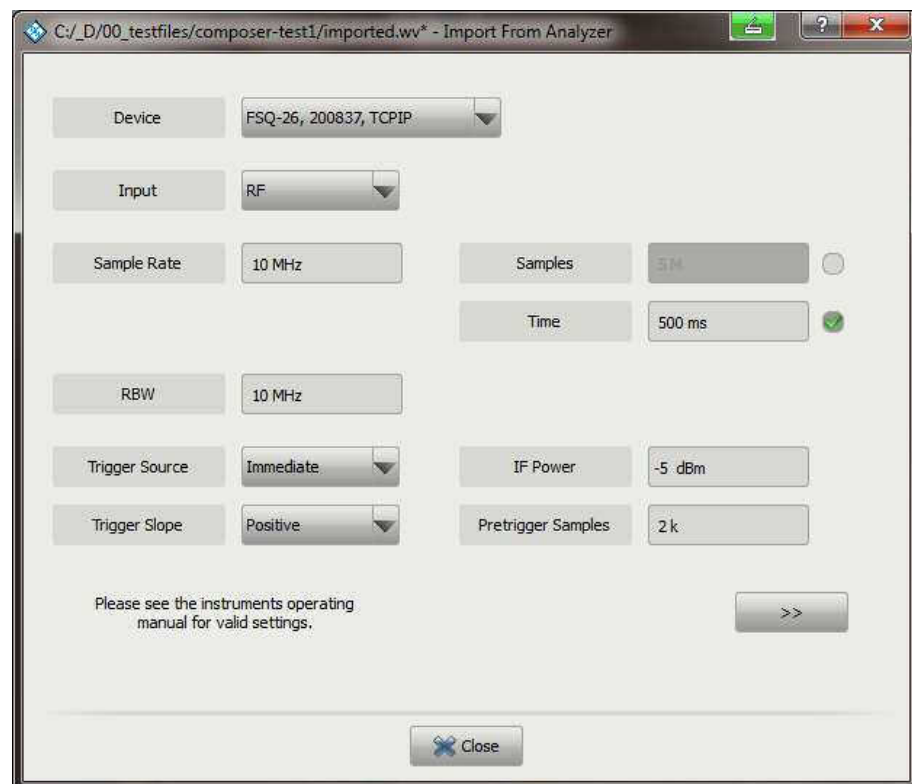
13 Capturing with the Spectrum Analyzer

The spectrum analyzer capturing module records I/Q data using a spectrum analyzer and saves this data as a waveform file. The module can be invoked via the context menu for a folder entry in one of the local file-system browsers.

Before using the module, you must configure the spectrum analyzer for use with ARB Toolbox PLUS. This is done in the Instrument Configuration panel (*Menu* → *Instrument* → *Configure*). The spectrum analyzer is added in the same way as the signal generators are added.

FSQ-26, 200837	TCPIP	FSQ26
VISA resource	TCPIP::FSQ26-200837::INSTR	
Firmware	4.65	
User data	D:	

Once a spectrum analyzer is added to the instrument list, it can be selected as a capturing source in the capturing module.



The first page of the capturing module provides all of the settings that define the capturing process. These settings are described below.

Input

The default signal input is the RF port. Alternatively, the analog or digital I/Q inputs can be selected. Depending on the spectrum analyzer, these options may not be available, and an error is generated during the capturing process.

Sample Rate

The sample rate sets the rate at which the spectrum analyzer samples the signal. Valid ranges must be looked up in the instrument manual, and they depend on the instrument, its options and the settings.

Samples / Time

The capturing process can be configured to either record a fixed number of samples or to record for a fixed period of time.

RBW

Sets the resolution bandwidth for the capturing process. Valid ranges must be looked up in the instrument manual. They depend on the instrument and its options.

Trigger Source

The default trigger source is immediate, which starts the capturing without waiting for a trigger event. Alternatively, the IF Power and External trigger modes are available if the instrument supports this setting.

Trigger Slope

This setting defines whether the trigger occurs at the rising or falling signal slope. It is valid for the External and IF Power trigger modes.

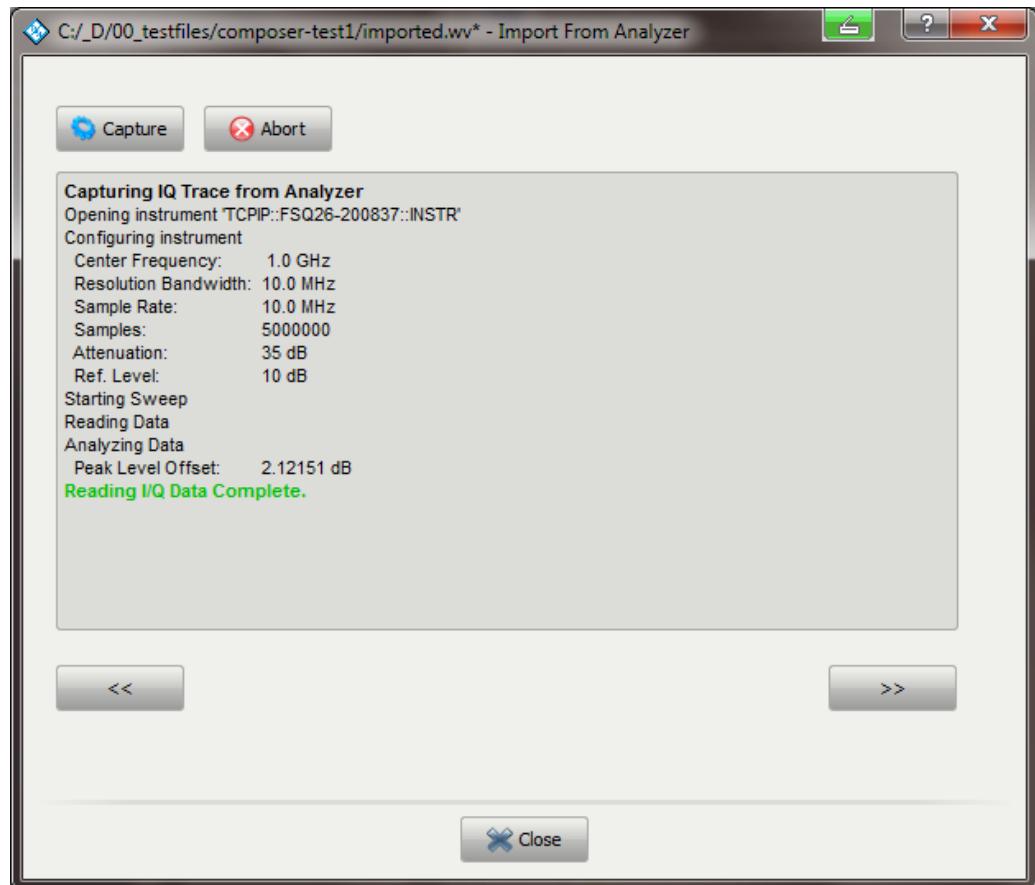
IF Power

This setting defines the trigger threshold in dBm when the trigger source is set to IF Power.

Pretrigger Samples

The number of pretrigger samples defines the sample count that is captured before the trigger event occurs.

The second page of the capturing module controls the capturing process itself. Text messages inform the user about the current capturing state.



Capture

The capture button starts a capturing process. This includes the following steps:

- ▶ Configure the instrument.
- ▶ Wait for the trigger and start the sweep.
- ▶ Wait for completion.
- ▶ Read the I/Q trace data to the PC.



Depending on the speed of the selected remote control interface, transferring a larger number of samples may take a significant amount of time.

Abort

Aborts the capturing process in the state where the analyzer waits for a trigger event.

The capturing process can be repeated multiple times. Previously recorded data is overwritten by new data. Once all data is captured, the Next (>>) button becomes available and leads to the page for rescaling the captured data. After the rescaling mode is selected, the captured data can be saved as a waveform file.

Appendix

A Licenses

A.1 GNU Lesser General Public License (LGPL) 2.1

Version 2.1, February 1999

Copyright (C) 1991, 1999 Free Software Foundation, Inc.

51 Franklin Street, Fifth Floor, Boston, MA 02110-1301 USA

Everyone is permitted to copy and distribute verbatim copies of this license document, but changing it is not allowed.

TERMS AND CONDITIONS FOR COPYING, DISTRIBUTION AND MODIFICATION

0. This License Agreement applies to any software library or other program which contains a notice placed by the copyright holder or other authorized party saying it may be distributed under the terms of this Lesser General Public License (also called "this License"). Each licensee is addressed as "you".

A "library" means a collection of software functions and/or data prepared so as to be conveniently linked with application programs (which use some of those functions and data) to form executables.

The "Library", below, refers to any such software library or work which has been distributed under these terms. A "work based on the Library" means either the Library or any derivative work under copyright law: that is to say, a work containing the Library or a portion of it, either verbatim or with modifications and/or translated straightforwardly into another language. (Hereinafter, translation is included without limitation in the term "modification".)

"Source code" for a work means the preferred form of the work for making modifications to it. For a library, complete source code means all the source code for all modules it contains, plus any associated interface definition files, plus the scripts used to control compilation and installation of the library.

Activities other than copying, distribution and modification are not covered by this License; they are outside its scope. The act of running a program using the Library is not restricted, and output from such a program is covered only if its contents constitute a work based on the Library (independent of the use of the Library in a tool for writing it). Whether that is true depends on what the Library does and what the program that uses the Library does.

1. You may copy and distribute verbatim copies of the Library's complete source code as you receive it, in any medium, provided that you conspicuously and appropriately publish on each copy an appropriate copyright notice and disclaimer of warranty; keep intact all the notices that refer to this License and to the absence of any warranty; and distribute a copy of this License along with the Library.

You may charge a fee for the physical act of transferring a copy, and you may at your option offer warranty protection in exchange for a fee.

2. You may modify your copy or copies of the Library or any portion of it, thus forming a work based on the Library, and copy and distribute such modifications or work under the terms of Section 1 above, provided that you also meet all of these conditions:

- **a)** The modified work must itself be a software library.
- **b)** You must cause the files modified to carry prominent notices stating that you changed the files and the date of any change.

- **c)** You must cause the whole of the work to be licensed at no charge to all third parties under the terms of this License.
- **d)** If a facility in the modified Library refers to a function or a table of data to be supplied by an application program that uses the facility, other than as an argument passed when the facility is invoked, then you must make a good faith effort to ensure that, in the event an application does not supply such function or table, the facility still operates, and performs whatever part of its purpose remains meaningful.

(For example, a function in a library to compute square roots has a purpose that is entirely well-defined independent of the application. Therefore, Subsection 2d requires that any application-supplied function or table used by this function must be optional: if the application does not supply it, the square root function must still compute square roots.)

These requirements apply to the modified work as a whole. If identifiable sections of that work are not derived from the Library, and can be reasonably considered independent and separate works in themselves, then this License, and its terms, do not apply to those sections when you distribute them as separate works. But when you distribute the same sections as part of a whole which is a work based on the Library, the distribution of the whole must be on the terms of this License, whose permissions for other licensees extend to the entire whole, and thus to each and every part regardless of who wrote it.

Thus, it is not the intent of this section to claim rights or contest your rights to work written entirely by you; rather, the intent is to exercise the right to control the distribution of derivative or collective works based on the Library.

In addition, mere aggregation of another work not based on the Library with the Library (or with a work based on the Library) on a volume of a storage or distribution medium does not bring the other work under the scope of this License.

3. You may opt to apply the terms of the ordinary GNU General Public License instead of this License to a given copy of the Library. To do this, you must alter all the notices that refer to this License, so that they refer to the ordinary GNU General Public License, version 2, instead of to this License. (If a newer version than version 2 of the ordinary GNU General Public License has appeared, then you can specify that version instead if you wish.) Do not make any other change in these notices.

Once this change is made in a given copy, it is irreversible for that copy, so the ordinary GNU General Public License applies to all subsequent copies and derivative works made from that copy.

This option is useful when you wish to copy part of the code of the Library into a program that is not a library.

4. You may copy and distribute the Library (or a portion or derivative of it, under Section 2) in object code or executable form under the terms of Sections 1 and 2 above provided that you accompany it with the complete corresponding machine-readable source code, which must be distributed under the terms of Sections 1 and 2 above on a medium customarily used for software interchange.

If distribution of object code is made by offering access to copy from a designated place, then offering equivalent access to copy the source code from the same place satisfies the requirement to distribute the source code, even though third parties are not compelled to copy the source along with the object code.

5. A program that contains no derivative of any portion of the Library, but is designed to work with the Library by being compiled or linked with it, is called a "work that uses the Library". Such a work, in isolation, is not a derivative work of the Library, and therefore falls outside the scope of this License.

However, linking a "work that uses the Library" with the Library creates an executable that is a derivative of the Library (because it contains portions of the Library), rather than a "work that uses the library". The executable is therefore covered by this License. Section 6 states terms for distribution of such executables.

When a "work that uses the Library" uses material from a header file that is part of the Library, the object code for the work may be a derivative work of the Library even though the source code is not. Whether this is true is especially significant if the work can be linked without the Library, or if the work is itself a library. The threshold for this to be true is not precisely defined by law.

If such an object file uses only numerical parameters, data structure layouts and accessors, and small macros and small inline functions (ten lines or less in length), then the use of the object file is unrestricted, regardless of whether it is legally a derivative work. (Executables containing this object code plus portions of the Library will still fall under Section 6.)

Otherwise, if the work is a derivative of the Library, you may distribute the object code for the work under the terms of Section 6. Any executables containing that work also fall under Section 6, whether or not they are linked directly with the Library itself.

6. As an exception to the Sections above, you may also combine or link a "work that uses the Library" with the Library to produce a work containing portions of the Library, and distribute that work under terms of your choice, provided that the terms permit modification of the work for the customer's own use and reverse engineering for debugging such modifications.

You must give prominent notice with each copy of the work that the Library is used in it and that the Library and its use are covered by this License. You must supply a copy of this License. If the work during execution displays copyright

notices, you must include the copyright notice for the Library among them, as well as a reference directing the user to the copy of this License. Also, you must do one of these things:

- **a)** Accompany the work with the complete corresponding machine-readable source code for the Library including whatever changes were used in the work (which must be distributed under Sections 1 and 2 above); and, if the work is an executable linked with the Library, with the complete machine-readable "work that uses the Library", as object code and/or source code, so that the user can modify the Library and then relink to produce a modified executable containing the modified Library. (It is understood that the user who changes the contents of definitions files in the Library will not necessarily be able to recompile the application to use the modified definitions.)
- **b)** Use a suitable shared library mechanism for linking with the Library. A suitable mechanism is one that (1) uses at run time a copy of the library already present on the user's computer system, rather than copying library functions into the executable, and (2) will operate properly with a modified version of the library, if the user installs one, as long as the modified version is interface-compatible with the version that the work was made with.
- **c)** Accompany the work with a written offer, valid for at least three years, to give the same user the materials specified in Subsection 6a, above, for a charge no more than the cost of performing this distribution.
- **d)** If distribution of the work is made by offering access to copy from a designated place, offer equivalent access to copy the above specified materials from the same place.
- **e)** Verify that the user has already received a copy of these materials or that you have already sent this user a copy.

For an executable, the required form of the "work that uses the Library" must include any data and utility programs needed for reproducing the executable from it. However, as a special exception, the materials to be distributed need not include anything that is normally distributed (in either source or binary form) with the major components (compiler, kernel, and so on) of the operating system on which the executable runs, unless that component itself accompanies the executable.

It may happen that this requirement contradicts the license restrictions of other proprietary libraries that do not normally accompany the operating system. Such a contradiction means you cannot use both them and the Library together in an executable that you distribute.

7. You may place library facilities that are a work based on the Library side-by-side in a single library together with other library facilities not covered by this License, and distribute such a combined library, provided that the separate distribution of the work based on the Library and of the other library facilities is otherwise permitted, and provided that you do these two things:

- **a)** Accompany the combined library with a copy of the same work based on the Library, uncombined with any other library facilities. This must be distributed under the terms of the Sections above.
- **b)** Give prominent notice with the combined library of the fact that part of it is a work based on the Library, and explaining where to find the accompanying uncombined form of the same work.

8. You may not copy, modify, sublicense, link with, or distribute the Library except as expressly provided under this License. Any attempt otherwise to copy, modify, sublicense, link with, or distribute the Library is void, and will automatically terminate your rights under this License. However, parties who have received copies, or rights, from you under this License will not have their licenses terminated so long as such parties remain in full compliance.

9. You are not required to accept this License, since you have not signed it. However, nothing else grants you permission to modify or distribute the Library or its derivative works. These actions are prohibited by law if you do not accept this License. Therefore, by modifying or distributing the Library (or any work based on the Library), you indicate your acceptance of this License to do so, and all its terms and conditions for copying, distributing or modifying the Library or works based on it.

10. Each time you redistribute the Library (or any work based on the Library), the recipient automatically receives a license from the original licensor to copy, distribute, link with or modify the Library subject to these terms and conditions. You may not impose any further restrictions on the recipients' exercise of the rights granted herein. You are not responsible for enforcing compliance by third parties with this License.

11. If, as a consequence of a court judgment or allegation of patent infringement or for any other reason (not limited to patent issues), conditions are imposed on you (whether by court order, agreement or otherwise) that contradict the conditions of this License, they do not excuse you from the conditions of this License. If you cannot distribute so as to satisfy simultaneously your obligations under this License and any other pertinent obligations, then as a consequence you may not distribute the Library at all. For example, if a patent license would not permit royalty-free redistribution of the Library by all those who receive copies directly or indirectly through you, then the only way you could satisfy both it and this License would be to refrain entirely from distribution of the Library.

If any portion of this section is held invalid or unenforceable under any particular circumstance, the balance of the section is intended to apply, and the section as a whole is intended to apply in other circumstances.

It is not the purpose of this section to induce you to infringe any patents or other property right claims or to contest validity of any such claims; this section has the sole purpose of protecting the integrity of the free software distribution system which is implemented by public license practices. Many people have made generous contributions to the wide range of software distributed through that system in reliance on consistent application of that system; it is up to the author/donor to decide if he or she is willing to distribute software through any other system and a licensee cannot impose that choice.

This section is intended to make thoroughly clear what is believed to be a consequence of the rest of this License.

12. If the distribution and/or use of the Library is restricted in certain countries either by patents or by copyrighted interfaces, the original copyright holder who places the Library under this License may add an explicit geographical distribution limitation excluding those countries, so that distribution is permitted only in or among countries not thus excluded. In such case, this License incorporates the limitation as if written in the body of this License.

13. The Free Software Foundation may publish revised and/or new versions of the Lesser General Public License from time to time. Such new versions will be similar in spirit to the present version, but may differ in detail to address new problems or concerns.

Each version is given a distinguishing version number. If the Library specifies a version number of this License which applies to it and "any later version", you have the option of following the terms and conditions either of that version or of any later version published by the Free Software Foundation. If the Library does not specify a license version number, you may choose any version ever published by the Free Software Foundation.

14. If you wish to incorporate parts of the Library into other free programs whose distribution conditions are incompatible with these, write to the author to ask for permission. For software which is copyrighted by the Free Software Foundation, write to the Free Software Foundation; we sometimes make exceptions for this. Our decision will be guided by the two goals of preserving the free status of all derivatives of our free software and of promoting the sharing and reuse of software generally.

NO WARRANTY

15. BECAUSE THE LIBRARY IS LICENSED FREE OF CHARGE, THERE IS NO WARRANTY FOR THE LIBRARY, TO THE EXTENT PERMITTED BY APPLICABLE LAW. EXCEPT WHEN OTHERWISE STATED IN WRITING THE COPYRIGHT HOLDERS AND/OR OTHER PARTIES PROVIDE THE LIBRARY "AS IS" WITHOUT WARRANTY OF ANY KIND, EITHER EXPRESSED OR IMPLIED, INCLUDING, BUT NOT LIMITED TO, THE IMPLIED WARRANTIES OF MERCHANTABILITY AND FITNESS FOR A PARTICULAR PURPOSE. THE ENTIRE RISK AS TO THE QUALITY AND PERFORMANCE OF THE LIBRARY IS WITH YOU. SHOULD THE LIBRARY PROVE DEFECTIVE, YOU ASSUME THE COST OF ALL NECESSARY SERVICING, REPAIR OR CORRECTION.

16. IN NO EVENT UNLESS REQUIRED BY APPLICABLE LAW OR AGREED TO IN WRITING WILL ANY COPYRIGHT HOLDER, OR ANY OTHER PARTY WHO MAY MODIFY AND/OR REDISTRIBUTE THE LIBRARY AS PERMITTED ABOVE, BE LIABLE TO YOU FOR DAMAGES, INCLUDING ANY GENERAL, SPECIAL, INCIDENTAL OR CONSEQUENTIAL DAMAGES ARISING OUT OF THE USE OR INABILITY TO USE THE LIBRARY (INCLUDING BUT NOT LIMITED TO LOSS OF DATA OR DATA BEING RENDERED INACCURATE OR LOSSES SUSTAINED BY YOU OR THIRD PARTIES OR A FAILURE OF THE LIBRARY TO OPERATE WITH ANY OTHER SOFTWARE), EVEN IF SUCH HOLDER OR OTHER PARTY HAS BEEN ADVISED OF THE POSSIBILITY OF SUCH DAMAGES.